

Medical practice variations

Consultations and visits in general practice

Analysis of the distribution of medical practice in Belgium, in terms of volume and expenditure per patient and per insured (distribution, occurrence, trends by region, province and district), for the year **2023**



NIHDI – Healthcare Service – Directorate for Research, Development and Quality promotion

Appropriate care unit

Pascal Meeus, Virginie Dalcq, Benjamin Swine, Katrien Declercq, Delphine Beauport

Contact: appropriatecare@riziv-inami.fgov.be

Date of report: 30 August 2024

CONTENTS

CONTENTS	2
1. INTRODUCTION	3
2. SPECIFIC METHOD OF ANALYSIS	4
A. NIHDI NOMENCLATURE CODES SELECTED FOR ANALYSIS.....	4
B. PAST HISTORY OF NOMENCLATURE CODES	6
C. TRENDS IN THE BREAKDOWN OF NOMENCLATURE CODES PROVIDED, BY VOLUME.....	9
D. SOURCE OF DATA AND ANALYSIS PERIOD	10
E. SPECIFIC SELECTION CRITERIA	11
F. SPECIALISATION OF HEALTHCARE PROVIDERS	12
G. SPECIALISATION OF PRESCRIBERS.....	13
H. (ESTIMATED) NUMBER OF PATIENTS PER YEAR	14
I. STANDARDISATION.....	15
3. RESULTS	16
A. NATIONAL STANDARDISED USAGE RATE	16
B. STANDARDISED USAGE RATE BY SEX AND AGE	17
C. RATE OF OUTPATIENT CARE.....	21
D. STANDARDISED USAGE RATE BY REIMBURSEMENT SCHEME.....	23
E. TRENDS IN STANDARDISED USAGE RATES	25
F. GEOGRAPHICAL VARIATIONS IN STANDARDISED USAGE RATES	29
G. STANDARDISED HEALTHCARE EXPENDITURE BORNE BY THE INSURANCE	33
4. KEY DATA SUMMARY	38
5. APPENDICES	39
A. ANALYSIS OF VARIANCE (ANOVA), EXCEPT BRUSSELS	39
B. FREQUENCY OF PRACTICE OCCURRENCES (PER PATIENT).....	40
C. TYPES OF PATIENT CARE	44
D. CODING VARIATIONS AND PRACTICE ALTERNATIVES.....	46

1. INTRODUCTION

The Appropriate Care Unit was set up within the NIHDI's Directorate for Research, Development and Quality under NIHDI's Administration Contract for 2016-2018¹. Article 35 of this contract refers to 'the setting up of an Appropriate Care Unit, aiming specifically to promote an integrated approach to the rational use of resources'. The Appropriate Care Unit has been up and running since the second quarter of 2017.

The tasks of the Unit were set out formally in the '2016-2017 Healthcare monitoring Action plan', published by NIHDI on 18 July 2016¹. This plan lists around thirty measures designed to make healthcare provision more efficient, by encouraging appropriate practice and tackling unnecessary or inappropriate care.

The plan states that one of the tasks of the Appropriate Care Unit is to analyse the 'appropriateness of care', in order to identify unexplained variations in consumption patterns, identified after standardisation. Such variations can potentially point to non-optimal use of resources.

'Variations in medical practice' documents report on the analyses carried out in this framework. Each report focuses on a particular topic.

In this document, we present the figures and graphs relating to analyses² of practice in the area of Consultations and visits in general practice, and give the explanations necessary to understand these.

We have deliberately chosen not to attempt to interpret the figures, preferring to present the results to experts who are in a better position to do so. This document has nevertheless been made available to the public in order to provide objective, open input to discussions on this issue.

¹ (Institut national d'assurance maladie-invalidité, 2016)

² Readers interested in the methodology used in these quantitative analyses should consult the document entitled ['Variations in practice – Methodology'](#).

2. SPECIFIC METHOD OF ANALYSIS

A. NIHDI nomenclature codes selected for analysis

The NIHDI nomenclature codes selected for the analysis are listed below:

Outpatient	Inpatient	Rates	Expenses	Label	Creation	Deletion	Group N	Value
101010	x	yes	yes	Consultation au cabinet par un médecin généraliste sur base de droits acquis	01-04-1985		N01	N6
101032	x	yes	yes	Consultation au cabinet par un médecin généraliste	01-04-1985		N01	N8
101076	x	yes	yes	Consultation au cabinet par un médecin généraliste accrédité	01-09-1995		N01	N8
101091	x	no	yes	Supplément de garde porté en compte pour les consultations tenues de 19 à 21h dans le cadre d'un service de garde organisé	01-07-2008		N01	N2
101113	x	no	yes	Supplément de permanence porté en compte pour les consultations effectuées entre 18 et 21h réservé aux médecins inscrits auprès d'un service de garde organisé	01-07-2008		N01	N2
102410	x	no	yes	Majoration d'une consultation au cabinet par un médecin généraliste (101032, 101076) si la consultation est effectuée un samedi, un dimanche ou un jour férié entre 8 heures et 21 heures	01-01-1992		N01	D10
102432	x	no	yes	Majoration d'une consultation au cabinet par un médecin généraliste (101032, 101076) si la consultation est effectuée entre 21 heures et 8 heures	01-01-1992		N01	D18
102454	x	no	yes	Majoration d'une consultation au cabinet par un médecin généraliste sur base de droits acquis (101010) si la consultation est effectuée un samedi, un dimanche ou un jour férié entre 8 heures et 21 heures	01-01-1992		N01	D8
102476	x	no	yes	Majoration d'une consultation au cabinet par un médecin généraliste sur base de droits acquis (101010) si la consultation est effectuée entre 21 heures et 8 heures	01-01-1992		N01	D16
103095	x	no	yes	Supplément pour une consultation (101032, 101076) ou une visite (103132, 103412, 103434) inhabituelle du médecin généraliste	01-11-2016		N01	N7
103110	x	yes	yes	Visite par un médecin généraliste sur base de droits acquis	01-04-1985		N01	N4
103132	x	yes	yes	Visite par le médecin généraliste	01-04-1985		N01	N6
103213	x	yes	yes	Visite à l'occasion d'un même déplacement pour deux bénéficiaires par un médecin généraliste sur base de droits acquis	01-04-1985		N01	N4
103235	x	yes	yes	Visite à l'occasion d'un même déplacement pour plus de deux bénéficiaires par un médecin généraliste sur base de droits acquis	01-04-1985		N01	N4
103412	x	yes	yes	Visite à l'occasion d'un même déplacement pour deux bénéficiaires par le médecin généraliste	01-04-1985		N01	N6
103434	x	yes	yes	Visite à l'occasion d'un même déplacement pour plus de deux bénéficiaires par le médecin généraliste	01-04-1985		N01	N6
103913	x	yes	yes	Visite par le médecin généraliste agréé à un bénéficiaire dans des institutions avec résidence commune	01-07-1999	30-04-2013	N01	
104112	x	yes	yes	Visite par le médecin généraliste avec droits acquis à un bénéficiaire dans des institutions avec résidence commune	01-07-1999	30-04-2013	N01	
104215	x	yes	yes	Visite effectuée entre 18 heures et 21 heures par le médecin généraliste	01-01-1992		N01	N6
104230	x	yes	yes	Visite effectuée entre 21 heures et 8 heures par le médecin généraliste	01-01-1992		N01	N6
104252	x	yes	yes	Visite effectuée un samedi, un dimanche ou un jour férié, entre 8 heures et 21 heures, par le médecin généraliste	01-01-1992		N01	N6
104296	x	no	yes	Majoration d'une visite à l'occasion d'un même déplacement pour plusieurs patients par un médecin généraliste (103412, 103434) si la visite est effectuée un samedi, un dimanche ou un jour férié entre 8 et 21 heures	01-01-1992		N01	D10
104311	x	no	yes	Majoration d'une visite à l'occasion d'un même déplacement pour plusieurs patients par un médecin généraliste (103412, 103434) si la visite est effectuée entre 21 heures et 8 heures	01-01-1992		N01	D30

This table shows the NIHDI nomenclature codes selected for this analysis, stating whether or not they were included in the analyses of services and expenditure, and giving, for each one, a description, dates of creation and deletion, where appropriate, their N group (in the NIHDI nomenclature) and their value.

General practitioners – Consultations and visits in general practice

Outpatient	Inpatient	Rates	Expenses	Label	Creation	Deletion	Group N	Value
104333	x	no	yes	Majoration d'une visite à l'occasion d'un même déplacement pour plusieurs patients par un médecin généraliste (103412, 103434) si la visite est effectuée entre 18 et 21 heures	01-01-1992		N01	D8
104355	x	yes	yes	Consultation du médecin généraliste agréé appelé par un médecin au domicile du malade	01-01-1992	30-04-2013	N01	
104510	x	yes	yes	Visite effectuée entre 18 heures et 21 heures par un médecin généraliste sur base de droits acquis	01-01-1992		N01	N4
104532	x	yes	yes	Visite effectuée entre 21 heures et 8 heures par un médecin généraliste sur base de droits acquis	01-01-1992		N01	N4
104554	x	yes	yes	Visite effectuée un samedi, un dimanche ou un jour férié entre 8 heures et 21 heures par un médecin généraliste sur base de droits acquis	01-01-1992		N01	N4
104591	x	no	yes	Majoration d'une visite à l'occasion d'un même déplacement pour plusieurs patients par un médecin généraliste sur base de droits acquis (103213, 103235) si la visite est effectuée un samedi, un dimanche ou un jour férié entre 8 heures et 21 heures	01-01-1992		N01	D8
104613	x	no	yes	Majoration d'une visite à l'occasion d'un même déplacement pour plusieurs patients par le médecin généraliste sur base de droits acquis (103213, 103235) si la visite est effectuée entre 21 heures et 8 heures	01-01-1992		N01	D16
104635	x	no	yes	Majoration d'une visite à l'occasion d'un même déplacement pour plusieurs patients par le médecin généraliste sur base de droits acquis (103213, 103235) si la visite est effectuée entre 18 heures et 21 heures	01-01-1992		N01	D7
104650	x	yes	yes	Consultation du médecin généraliste avec droits acquis appelé par un médecin au domicile du malade	01-01-1992	30-04-2013	N01	
109955	x	no	yes	Frais de déplacement des médecins - supplément d'indemnités pour les médecins généralistes dans les régions rurales	01-04-1985		N01	J1

B. Past history of nomenclature codes

Outpatient	Inpatient	Date	Label
101010	x	01-07-2001	Consultation au cabinet du médecin généraliste avec droits acquis
101010	x	01-05-2013	Consultation au cabinet par un médecin généraliste sur base de droits acquis
101032	x	01-07-2001	Consultation au cabinet du médecin généraliste agréé
101032	x	01-05-2013	Consultation au cabinet par un médecin généraliste
101076	x	01-07-2001	Consultation au cabinet du médecin généraliste agréé accrédité
101076	x	01-05-2013	Consultation au cabinet par un médecin généraliste accrédité
102410	x	01-07-2002	Supplément pour consultation d'urgence au cabinet d'un médecin généraliste agréé : lorsque la consultation est effectuée un samedi, un dimanche ou un jour férié entre 8 heures et 21 heures
102410	x	01-05-2013	Majoration d'une consultation au cabinet par un médecin généraliste (101032, 101076) si la consultation est effectuée un samedi, un dimanche ou un jour férié entre 8 heures et 21 heures
102410	x	01-02-2022	Majoration d'une consultation au cabinet par un médecin généraliste (101032, 101076) si la consultation est effectuée un samedi, un dimanche ou un jour férié entre 8 heures et 21 heures
102432	x	01-07-2002	Supplément pour consultation d'urgence au cabinet d'un médecin généraliste agréé : lorsque la consultation est effectuée la nuit entre 21 heures et 8 heures
102432	x	01-05-2013	Majoration d'une consultation au cabinet par un médecin généraliste (101032, 101076) si la consultation est effectuée entre 21 heures et 8 heures
102432	x	01-02-2022	Majoration d'une consultation au cabinet par un médecin généraliste (101032, 101076) si la consultation est effectuée entre 21 heures et 8 heures
102454	x	01-07-2002	Supplément pour consultation d'urgence au cabinet d'un médecin généraliste avec droits acquis : lorsque la consultation est effectuée un samedi, un dimanche ou un jour férié entre 8 heures et 21 heures
102454	x	01-05-2013	Majoration d'une consultation au cabinet par un médecin généraliste sur base de droits acquis (101010) si la consultation est effectuée un samedi, un dimanche ou un jour férié entre 8 heures et 21 heures
102454	x	01-02-2022	Majoration d'une consultation au cabinet par un médecin généraliste sur base de droits acquis (101010) si la consultation est effectuée un samedi, un dimanche ou un jour férié entre 8 heures et 21 heures
102476	x	01-07-2002	Supplément pour consultation d'urgence au cabinet d'un médecin généraliste avec droits acquis : lorsque la consultation est effectuée la nuit entre 21 heures et 8 heures
102476	x	01-05-2013	Majoration d'une consultation au cabinet par un médecin généraliste sur base de droits acquis (101010) si la consultation est effectuée la nuit entre 21 heures et 8 heures
102476	x	01-02-2022	Majoration d'une consultation au cabinet par un médecin généraliste sur base de droits acquis (101010) si la consultation est effectuée entre 21 heures et 8 heures
103110	x	01-07-2001	Visite au domicile du malade, par le médecin généraliste avec droits acquis



This table displays the historic evolution of the definitions of the NIHDI-nomenclature codes taken into account for this analysis, if modifications were implemented during the period 2013-2023.

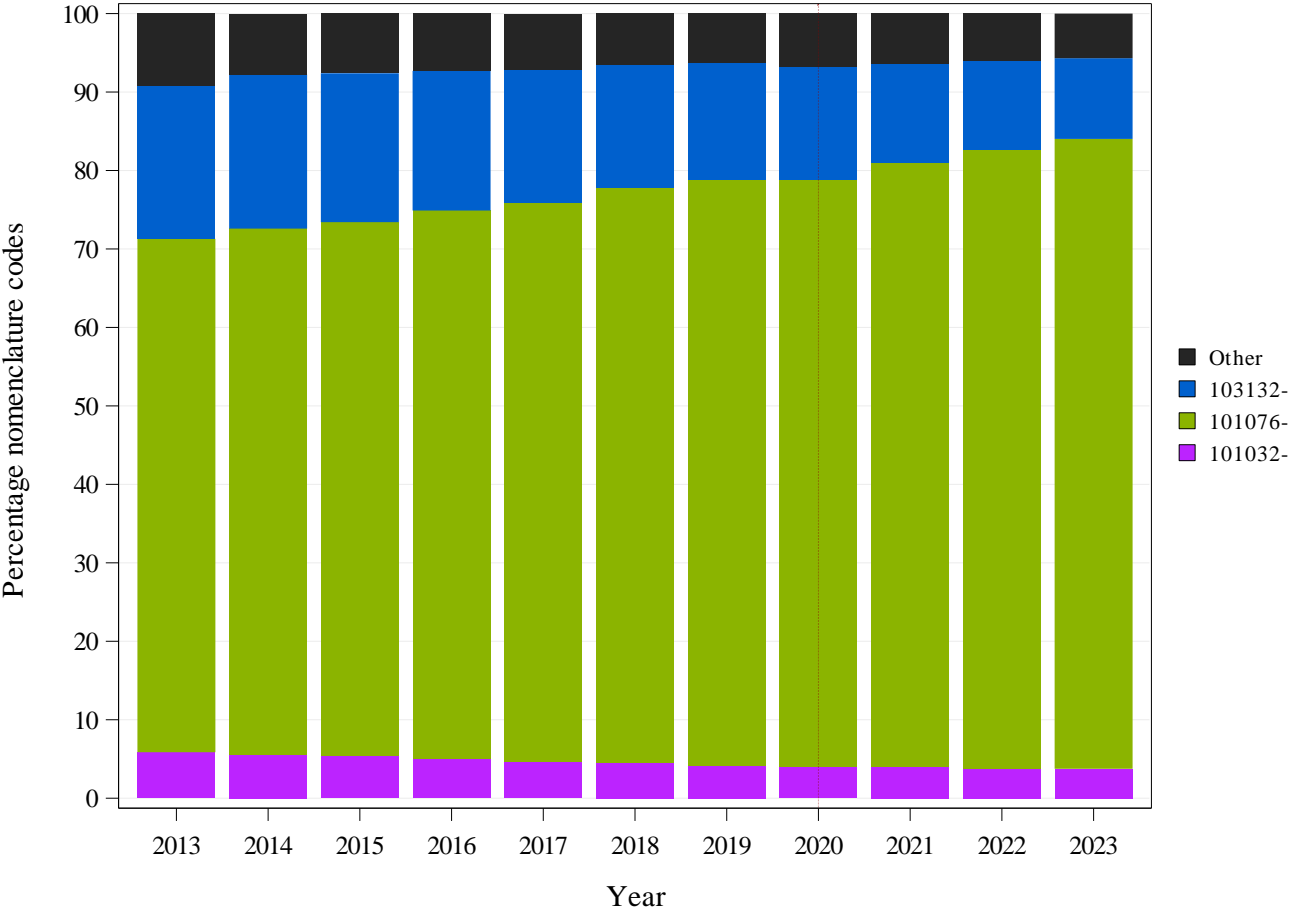
General practitioners – Consultations and visits in general practice

Outpatient	Inpatient	Date	Label
103110	x	01-05-2013	Visite par un médecin généraliste sur base de droits acquis
103132	x	01-07-2001	Visite, au domicile du malade, par le médecin généraliste agréé
103132	x	01-05-2013	Visite par le médecin généraliste
103213	x	01-11-2010	Visite par le médecin généraliste avec droits acquis à plusieurs bénéficiaires, à l'occasion d'un même déplacement : deux bénéficiaires, par bénéficiaire
103213	x	01-05-2013	Visite à l'occasion d'un même déplacement pour deux bénéficiaires par un médecin généraliste sur base de droits acquis
103235	x	01-11-2010	Visite par le médecin généraliste avec droits acquis à plusieurs bénéficiaires, à l'occasion d'un même déplacement : trois bénéficiaires ou plus, par bénéficiaire
103235	x	01-05-2013	Visite à l'occasion d'un même déplacement pour plus de deux bénéficiaires par un médecin généraliste sur base de droits acquis
103412	x	01-11-2010	Visite par le médecin généraliste agréé à plusieurs bénéficiaires, à l'occasion d'un même déplacement : deux bénéficiaires, par bénéficiaire
103412	x	01-05-2013	Visite à l'occasion d'un même déplacement pour deux bénéficiaires par le médecin généraliste
103434	x	01-11-2010	Visite par le médecin généraliste agréé à plusieurs bénéficiaires, à l'occasion d'un même déplacement : trois bénéficiaires ou plus, par bénéficiaire
103434	x	01-05-2013	Visite à l'occasion d'un même déplacement pour plus de deux bénéficiaires par le médecin généraliste
104215	x	01-07-2002	Visite effectuée par le médecin généraliste agréé au domicile du malade entre 18 heures et 21 heures
104215	x	01-05-2013	Visite effectuée entre 18 heures et 21 heures par le médecin généraliste
104230	x	01-07-2002	Visite effectuée par le médecin généraliste agréé au domicile du malade, la nuit, entre 21 heures et 8 heures
104230	x	01-05-2013	Visite effectuée entre 21 heures et 8 heures par le médecin généraliste
104252	x	01-11-2010	Visite effectuée par le médecin généraliste agréé un samedi, un dimanche ou un jour férié entre 8 heures et 21 heures
104252	x	01-05-2013	Visite effectuée un samedi, un dimanche ou un jour férié, entre 8 heures et 21 heures, par le médecin généraliste
104252	x	01-02-2022	Visite effectuée un samedi, un dimanche ou un jour férié, entre 8 heures et 21 heures, par le médecin généraliste
104296	x	01-11-2010	Suppléments aux visites nos 103412, 103434 ou 103913 : lorsque la visite est effectuée un samedi, un dimanche ou un jour férié entre 8 heures et 21 heures
104296	x	01-05-2013	Majoration d'une visite à l'occasion d'un même déplacement pour plusieurs patients par un médecin généraliste (103412, 103434) si la visite est effectuée un samedi, un dimanche ou un jour férié entre 8 et 21 heures
104296	x	01-02-2022	Majoration d'une visite à l'occasion d'un même déplacement pour plusieurs patients par un médecin généraliste (103412, 103434) si la visite est effectuée un samedi, un dimanche ou un jour férié entre 8 et 21 heures
104311	x	01-11-2010	Suppléments aux visites nos 103412, 103434 ou 103913 : lorsque la visite est effectuée la nuit entre 21 heures et 8 heures
104311	x	01-05-2013	Majoration d'une visite à l'occasion d'un même déplacement pour plusieurs patients par un médecin généraliste (103412, 103434) si la visite est effectuée entre 21 heures et 8 heures
104311	x	01-02-2022	Majoration d'une visite à l'occasion d'un même déplacement pour plusieurs patients par un médecin généraliste (103412, 103434) si la visite est effectuée entre 21 heures et 8 heures
104333	x	01-11-2010	Suppléments aux visites nos 103412, 103434 ou 103913 : lorsque la visite est effectuée le soir entre 18 heures et 21 heures
104333	x	01-05-2013	Majoration d'une visite à l'occasion d'un même déplacement pour plusieurs patients par un médecin généraliste (103412, 103434) si la visite est effectuée entre 18 et 21 heures
104333	x	01-02-2022	Majoration d'une visite à l'occasion d'un même déplacement pour plusieurs patients par un médecin généraliste (103412, 103434) si la visite est effectuée entre 18 et 21 heures
104510	x	01-07-2002	Visite effectuée par le médecin généraliste avec droits acquis au domicile du malade entre 18 heures et 21 heures
104510	x	01-05-2013	Visite effectuée entre 18 heures et 21 heures par un médecin généraliste sur base de droits acquis
104532	x	01-07-2002	Visite effectuée par le médecin généraliste avec droits acquis au domicile du malade, la nuit, entre 21 heures et 8 heures

General practitioners – Consultations and visits in general practice

Outpatient	Inpatient	Date	Label
104532	x	01-05-2013	Visite effectuée entre 21 heures et 8 heures par un médecin généraliste sur base de droits acquis
104554	x	01-11-2010	Visite effectuée par le médecin généraliste avec droits acquis un samedi, un dimanche ou un jour férié entre 8 heures et 21 heures.
104554	x	01-05-2013	Visite effectuée un samedi, un dimanche ou un jour férié entre 8 heures et 21 heures par un médecin généraliste sur base de droits acquis
104554	x	01-02-2022	Visite effectuée un samedi, un dimanche ou un jour férié entre 8 heures et 21 heures par un médecin généraliste sur base de droits acquis
104591	x	01-11-2010	Suppléments aux visites n°s 103213, 103235 ou 104112 : lorsque la visite est effectuée un samedi, un dimanche ou un jour férié entre 8 heures et 21 heures
104591	x	01-05-2013	Majoration d'une visite à l'occasion d'un même déplacement pour plusieurs patients par un médecin généraliste sur base de droits acquis (103213, 103235) si la visite est effectuée un samedi, un dimanche ou un jour férié entre 8 heures et 21 heures
104591	x	01-02-2022	Majoration d'une visite à l'occasion d'un même déplacement pour plusieurs patients par un médecin généraliste sur base de droits acquis (103213, 103235) si la visite est effectuée un samedi, un dimanche ou un jour férié entre 8 heures et 21 heures
104613	x	01-11-2010	Suppléments aux visites n°s 103213, 103235 ou 104112 : lorsque la visite est effectuée la nuit entre 21 heures et 8 heures
104613	x	01-05-2013	Majoration d'une visite à l'occasion d'un même déplacement pour plusieurs patients par le médecin généraliste sur base de droits acquis (103213, 103235) si la visite est effectuée entre 21 heures et 8 heures
104613	x	01-02-2022	Majoration d'une visite à l'occasion d'un même déplacement pour plusieurs patients par le médecin généraliste sur base de droits acquis (103213, 103235) si la visite est effectuée entre 21 heures et 8 heures
104635	x	01-11-2010	Suppléments aux visites n°s 103213, 103235 ou 104112 : lorsque la visite est effectuée le soir entre 18 heures et 21 heures
104635	x	01-05-2013	Majoration d'une visite à l'occasion d'un même déplacement pour plusieurs patients par le médecin généraliste sur base de droits acquis (103213, 103235) si la visite est effectuée entre 18 heures et 21 heures
104635	x	01-02-2022	Majoration d'une visite à l'occasion d'un même déplacement pour plusieurs patients par le médecin généraliste sur base de droits acquis (103213, 103235) si la visite est effectuée entre 18 heures et 21 heures
109955	x	01-01-2002	Frais de déplacement des médecins - supplément d'indemnités pour les médecins généralistes dans les régions rurales
109955	x	22-02-2013	Frais de déplacement des médecins - supplément d'indemnités pour les médecins généralistes dans les régions rurales

C. Trends in the breakdown of nomenclature codes provided, by volume



See page 4 for details about the NIHDI nomenclature codes selected for analysis.
Note : The year 2020 was highlighted by a vertical dashed line, in order to draw the attention on the impact of the COVID-19 crisis.

D. Source of data and analysis period

The data used in the analyses have been taken from the following databases:

Document N	for the utilisation rate and amount of expenses of insured persons (who meet the selection criteria) whose age, sex, preferential regime and residence are known 2013-2023
Document P	for the utilisation rate and amount of expenses of insured persons (who meet the selection criteria) by type of medical specialities in 2023
Document P, SHA, ADH	for the practice occurrences and analysis of patient care settings (private ambulatory or polyclinic, day or inpatient hospitalisation) in 2022
-	-

Analysis period	2013-2023
------------------------	-----------

'N Documents' are monthly data sent by the sickness funds to NIHDI, within three months. These data show the number of services provided, dates and the fees involved. Every six months, these data are compiled by the insurers, which also add data on patients: age, gender, social category and district of residence. N Documents, however, cannot be used to analyse the combinations of services received by individual patients.

'P Documents' are six-monthly data sent by the sickness funds to NIHDI, within four months. These data show the services provided, the service-provider, the prescriber, the place of provision of service, and the hospital where patients were treated. P Documents can be used to monitor medical consumption and pricing, but not (yet) to analyse services per patient.

'Documents SHA, ADH' are sent annually and within six months by the insurer-organisations to the NIHDI. They include all the services provided respectively in day admission and standard hospitalisation, in general hospitals per hospital stay.

Occurrence: Occurrence values are based on the most recent year that allows consolidation by patient between P and SHA-ADH documents, usually the year preceding the last year of the analysis period.

E. Specific selection criteria

Several filters may have been applied to the data, so that only one section of the population is considered in the analyses. If so, the filters used are shown in the table below:

FILTERS APPLIED TO DATA	
Sex	women and men
Age	all
-	-

The indicators presented in the analysis always refer to this population.

F. Specialisation of healthcare providers

Specialisation of the provider	Total providers	Concerned providers	% Providers	Median of H.C. services	Q3 of H.C. services	% Total H.C. services
General practitioners	14.755	13.930	94%	3.284	5.243	99,31%
Other specialities	7.705	1.472	19%	476	642	0,69%
Total	22.460	15.402	69%	2.925	4.986	100,00%



This table shows the following non-standardised data, by medical specialities (figures for the year 2023):

- The number of service-providers per specialisation who have recorded at least one service (the figures are exceptionally extrapolated from a single semester if an * is indicated in the header, otherwise the full year is taken into account);
- The number of service-providers recording services under the nomenclature codes selected for this analysis;
- The service-providers for these codes as a percentage of the total number of service-providers recording provision of at least one service;
- The median number and third quartile of services per service-provider (recording provision under these codes);
- The service percentage, i.e. the number of services recorded for this specialisation as a percentage of total services provided.

G. Specialisation of prescribers

[Specialisation of prescribers unknown or not applicable]



This table shows, in order, the following non-standardised data per specialities (figures for the year 2023):

- The number of prescribers who have prescribed at least one service (the figures are exceptionally extrapolated from a single semester if an * is indicated in the header, otherwise the full year is taken into account);
- The number of prescribers prescribing the nomenclature codes selected for this analysis;
- The prescribers prescribing these codes as a percentage of the number of prescribers prescribing at least one service;
- The median number and third quartile of services per prescriber (prescribing these codes);
- The percentage of services prescribed, i.e. the number of prescriptions issued for this specialisation as a percentage of total services prescribed.

H. (Estimated) number of patients per year

Sometimes several codes (similar or different) relating to the same practice are charged several times on the same day and/or in the same year for the same patient.

To estimate the number of patients treated, the total number of services accounted for per year is divided by an average division factor (total average occurrence).

In this analysis, the average division factor is 5,37. The latter is calculated based on 2022 and results from dividing the total number of services provided by the total number of different insured persons who have used these services (by age group, sex and district).

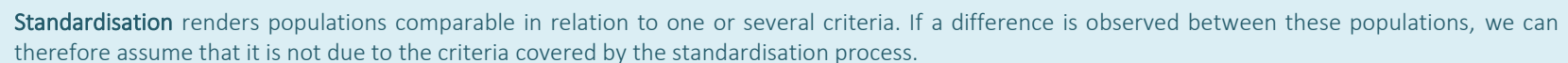
This average division factor is called the total average occurrence. This total average occurrence is the product of the average occurrence per patient per day (average number of services per day per patient) and the average occurrence per patient per year (average number of days per year per patient). Explanations of these average occurrences per day and per year can be found in the appendix 'Frequency of practice occurrences (per patient)'.

However, volumes are not divided for the data on providers and prescribers (see pages 6, 9-10), nor for the graphs and tables showing the distribution of volumes and occurrences of the practice (see pages 18-19 and Annexes B to D).

I. Standardisation

Data presented by geographical subset* or population category are standardised per year, based on age (by year), sex and preferential regime of the national population in 2023.

Note: Districts with fewer than 100 000 insured persons are associated with a neighbouring district from the same province. The following districts are therefore considered together: Oostende/Veurne, Ieper/Diksmuide, Roeselare/Tielt, Gent/Eeklo, Charleroi/Thuin, Huy/Waremme, Namur/Philippeville, Neufchâteau/Marche-en-Famenne, Virton/Bastogne/Arlon. These regroupings and labels apply to all measurements, maps and graphs produced by district. Throughout the document, the concept of regrouped district is reflected in the use of the term "district"



Standardisation renders populations comparable in relation to one or several criteria. If a difference is observed between these populations, we can therefore assume that it is not due to the criteria covered by the standardisation process.

3. RESULTS

A. National standardised usage rate

	TOTAL
<i>Number of services per year</i>	50.710.726
Average occurrence per patient per day (average number of services per day)	1,00
Average occurrence per patient per year (average number of days per year)	5,35
Total average occurrence (divides the number of services)	5,37
<i>Estimated number of patients per year</i>	9.463.300
Standardised usage rate per 100 000 insured persons	82.143

B. Standardised usage rate by sex and age

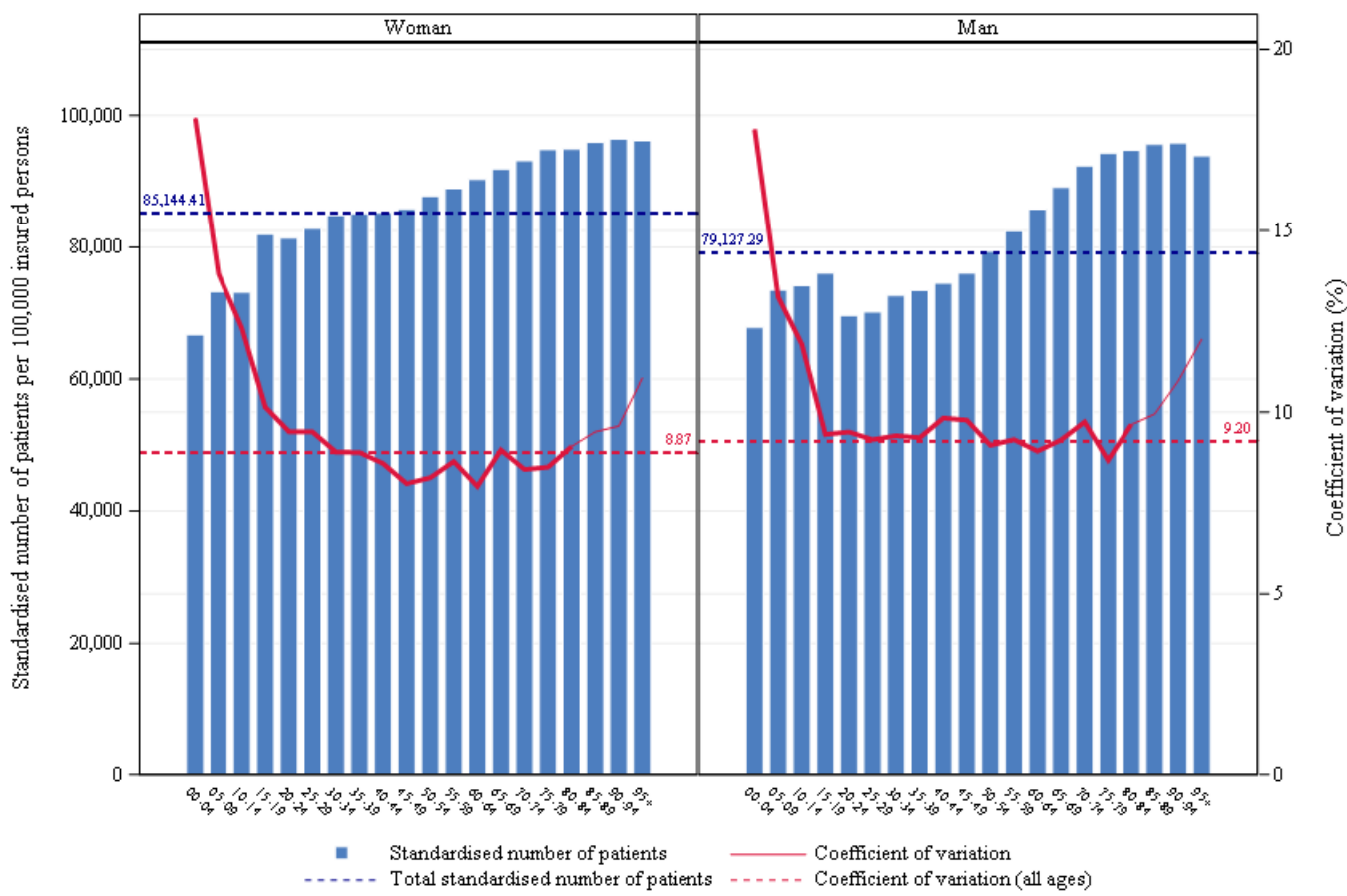
	TOTAL
<i>Estimated number of patients per year</i>	9.463.300
Median age (years)	45
Mean age (years)	44,46
Max/Min Ratio of the median age (by district*)	1,12
Standardised usage rate: women (per 100 000)	85.144
Standardised usage rate: men (per 100 000)	79.127
Ratio women/men	1,08
Percentage of women	52,84%

Max/Min Ratio:

The max/min ratio measures the dispersion of values. It is calculated as the ratio of the maximum value found for the variable, in all districts*, to the minimum value, excluding outliers. If this minimum value is equal to zero, the max/min ratio cannot be calculated, and is reported as 'NA' ('not applicable').

* Some districts are grouped together, see page 12, Standardisation

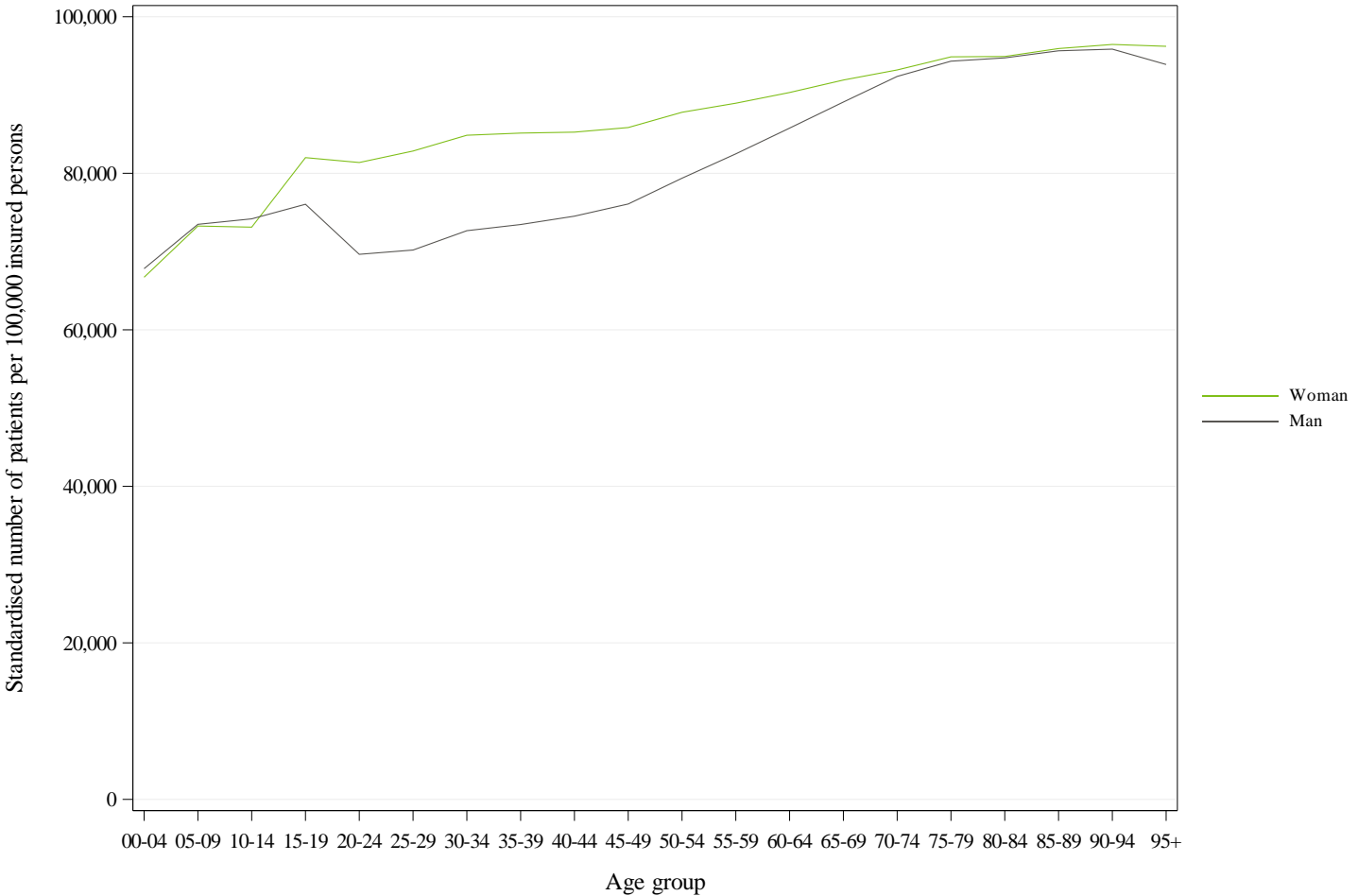
General practitioners – Consultations and visits in general practice



This figure is made up of bar charts for each sex. The **coefficient of variation**, shown by the red line, measures the relative dispersion of the standardised usage rates observed for each district*, by age group and sex (standard deviation divided by the mean). This line is shown in bold for age groups where the coefficient of variation can be validly interpreted (i.e. for age groups in which there are sufficient insured persons per district* to allow for a proper comparison).

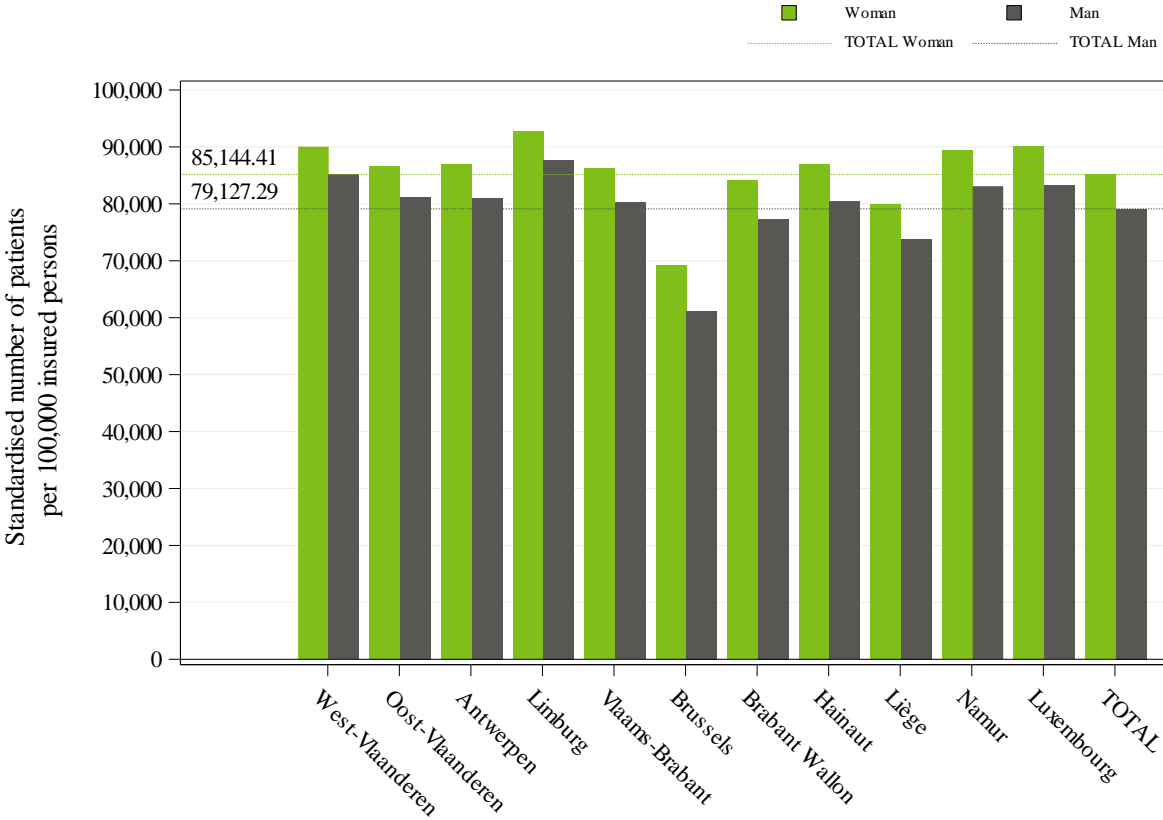
The left-hand vertical axis of the graph represents the standardised usage rate, and the right-hand axis the coefficient of variation. The horizontal axis shows the age groups. The horizontal dotted lines show the total values of the standardised usage rates (in blue) and of the coefficient of variation (in red).

Standardised usage rate per 100 000 insured persons, and coefficient of variation for the districts*, by age group and sex, for the year 2023



Comparison of the standardised usage rates by age group and by sex (per 100 000 insured persons) in 2023

General practitioners – Consultations and visits in general practice



This histogram shows standardised usage rates by province and by sex. The grey bars show the rates for men, while the green bars show the rates for women, for each province. The grey and green broken lines show the total standardised usage rates, again grey for men, green for women.

Standardised usage rate per 100 000 insured persons, by sex and by province for the year 2023

C. Rate of outpatient care

	TOTAL
<i>Number of services per year</i>	50.710.726
Percentage of out-patient care	100,00%
Max/min ratio of out-patient care percentage (by district*)	1

Aangezien enkel ambulante nomenclatuurcodes werden geselecteerd, kan geen grafiek weergegeven worden.
 Vu que seuls des codes de nomenclature ambulatoires ont été sélectionnés, le graphique ne peut être affiché
 Since only the outpatient nomenclature codes are selected, the graph cannot be displayed

Percentage of outpatient care, total and by region

← This graph shows the percentage of outpatient services (including hospital day admissions), i.e. the number of outpatient services provided as a percentage of total services (outpatient and hospital stays). Besides the bar per region, there is a bar for the entire Belgian population. A dotted line also shows this overall ratio.

Aangezien enkel ambulante nomenclatuurcodes werden geselecteerd, kan geen grafiek weergegeven worden.
Vu que seuls des codes de nomenclature ambulatoires ont été sélectionnés, le graphique ne peut être affiché
Since only the outpatient nomenclature codes are selected, the graph cannot be displayed

province

Trends in the percentage of outpatient care by province

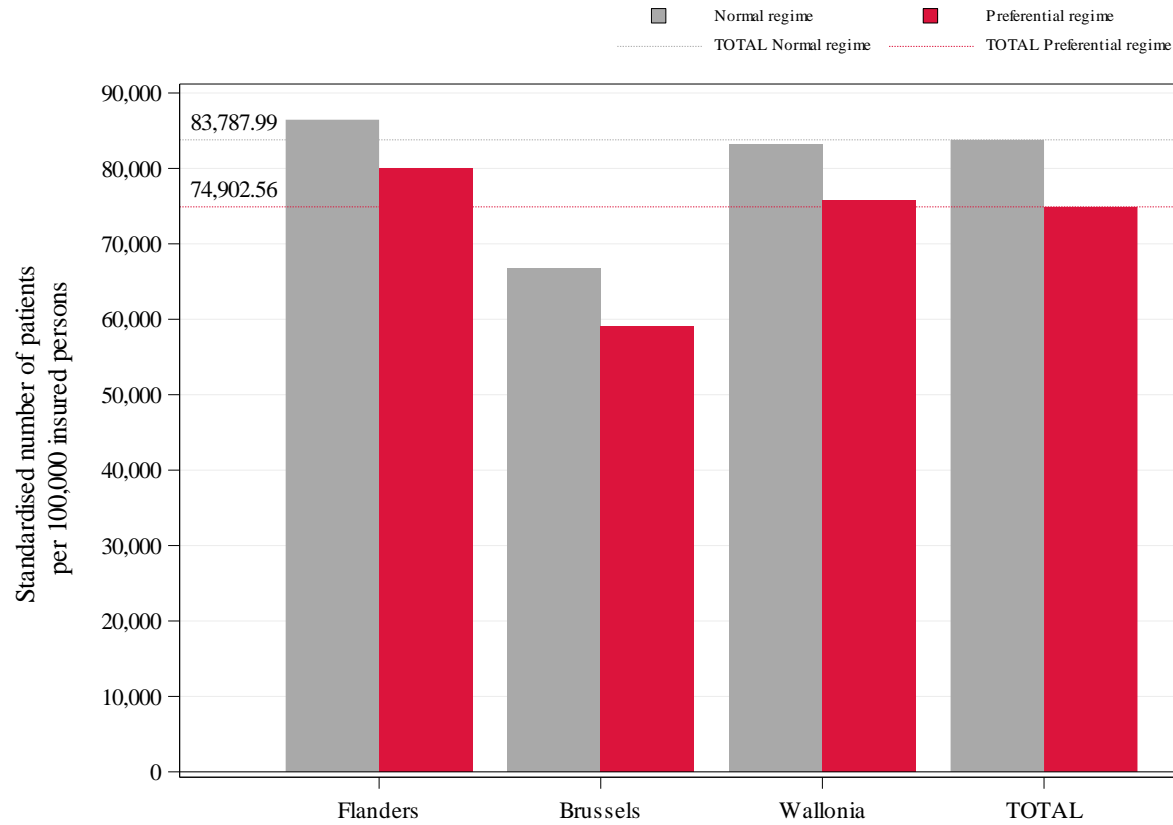
N.B.:

- The year 2020 was highlighted by a vertical dashed line, in order to draw the attention on the impact of the COVID-19 crisis
- A complementary document to this chapter, about the patient care per type, is enclosed in this report (see Annex C)

D. Standardised usage rate by reimbursement scheme

	TOTAL
<i>Estimated number of patients per year</i>	9.463.300
Percentage provided under the preferential reimbursement scheme	18,77%
Standardised usage rate with preferential reimbursement scheme (per 100 000)	74.903
Standardised usage rate without preferential reimbursement scheme (per 100 000)	83.788
Ratio Preferential scheme /General scheme	0,89

General practitioners – Consultations and visits in general practice



Standardised usage rate by reimbursement scheme and by region

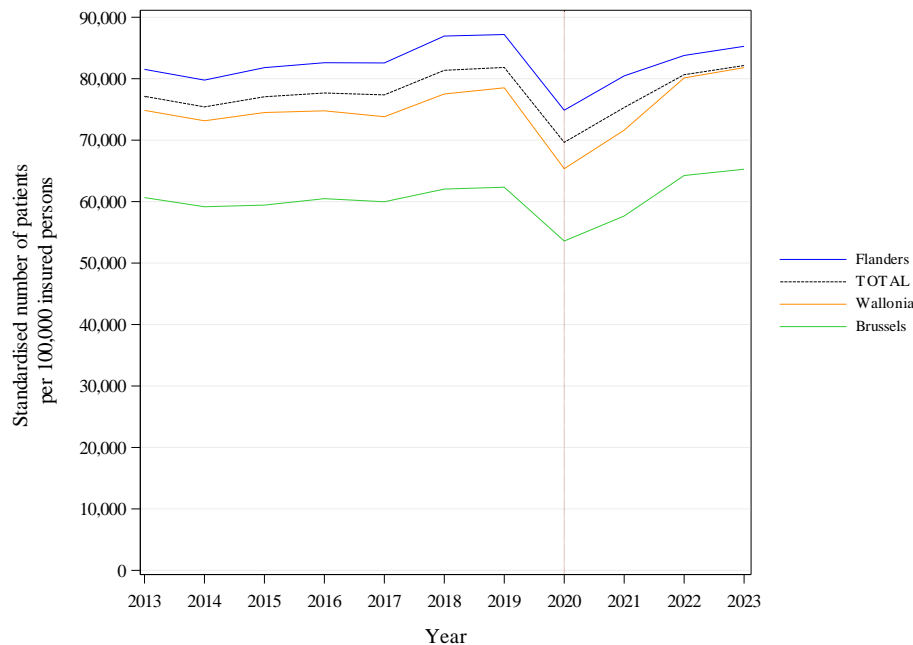
This graph shows the standardised usage rates per 100,000 insured with (in red) and without (in grey) the preferential reimbursement scheme, by region and in total. The red and grey dotted lines show the overall standardised rates of use of patients per 100,000 insured, with and without the preferential reimbursement scheme, respectively.

E. Trends in standardised usage rates

	TOTAL	Statistical significance
Estimated number of patients per year	9.463.300	
Trend (2013-2023)	0,63%	*** (0,59%)
Trend (2013-2021)	-0,30%	**
Trend (2021-2023)	4,44%	

These trends correspond to the average annual growth rate.

A non-significant statistical test indicates that the trend estimated by the model (in brackets) is stable, or that there is no break in the trend

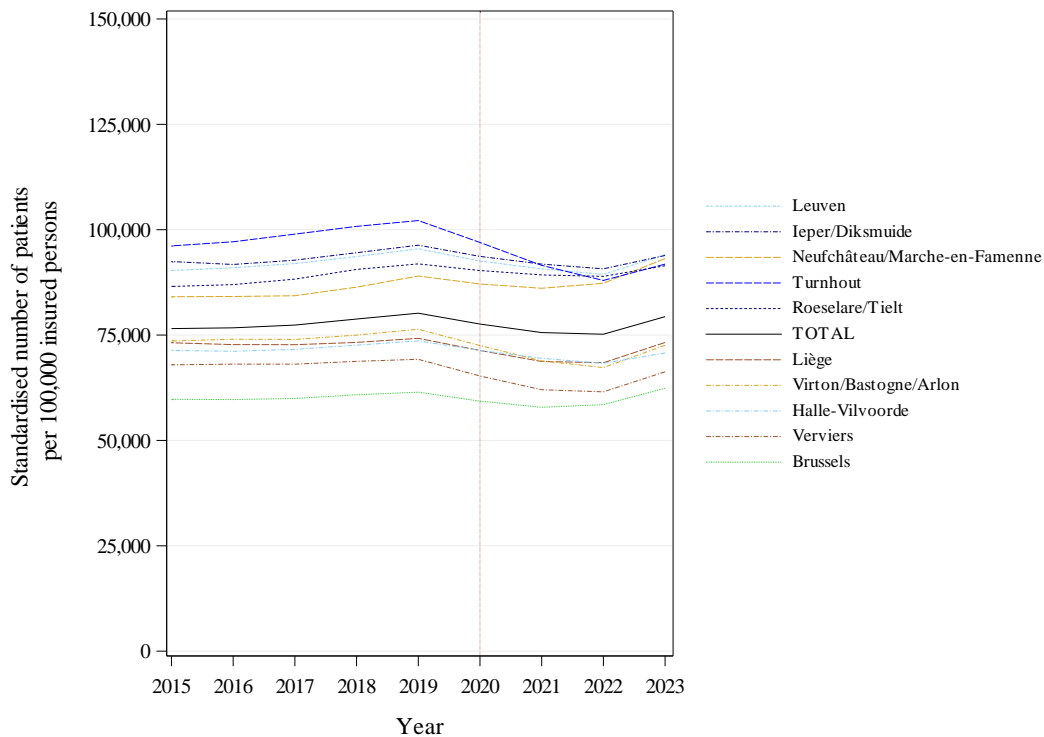


This graph shows a coloured curve for each region and a black curve for the entire Belgian population. The x-axis shows the years, and the y-axis shows the standardised usage rate per 100 000 insured persons.

Note : The year 2020 was highlighted by a vertical dashed line, in order to draw the attention on the impact of the COVID-19 crisis.

Trends in the standardised usage rate per 100 000 insured persons, by region

General practitioners – Consultations and visits in general practice



Trends in the standardised usage rate per 100 000 insured persons by district*

This graph shows a colored line for each district* and a black line for the entire Belgian population. The x-axis shows the years, and the y-axis shows the standardised usage rate per 100 000 insured persons.

To better highlight changes over time, the rates shown are **rolling averages** of the rates for the three years preceding the year in question (including the year itself).

The graph only shows the five districts* with the highest average rates and the five districts* with the lowest average rates over the last 3 years studied (excluding the districts of Hainaut heavily impacted by the 2019 administrative reorganization).

Note : The year 2020 was highlighted by a vertical dashed line, in order to draw the attention on the impact of the COVID-19 crisis.

General practitioners – Consultations and visits in general practice

		Usage Rate	Annual increase			Structural break
		2023 (per 10 ⁵ insured)	2013- 2023	2013- 2021	2021- 2023	
Provinces	West Flanders	87.580	0,36%	0,13%	1,31%	NA
	East Flanders	83.919	0,62%	0,34%	1,75%	NA
	Antwerp	83.999	0,22%	-0,83%	4,52%	NA
	Limburg	90.191	0,90%	0,09%	4,19%	NA
	Flemish Brabant	83.240	0,36%	-0,24%	2,81%	NA
	Brussels	65.272	0,74%	-0,63%	6,40%	NA
	Walloon Brabant	80.772	0,85%	-0,19%	5,09%	NA
	Hainaut	83.743	1,47%	-0,01%	7,60%	NA
	Liège	76.963	0,24%	-1,41%	7,11%	NA
	Namur	86.249	0,81%	-0,56%	6,49%	NA
	Luxembourg	86.695	0,97%	-0,22%	5,88%	NA
Regions	Flanders	85.270	0,45%	-0,16%	2,95%	NA
	Brussels	65.272	0,74%	-0,63%	6,40%	NA
	Wallonia	81.800	0,89%	-0,55%	6,87%	NA
TOTAL		82.143	0,63%	-0,30%	4,44%	**

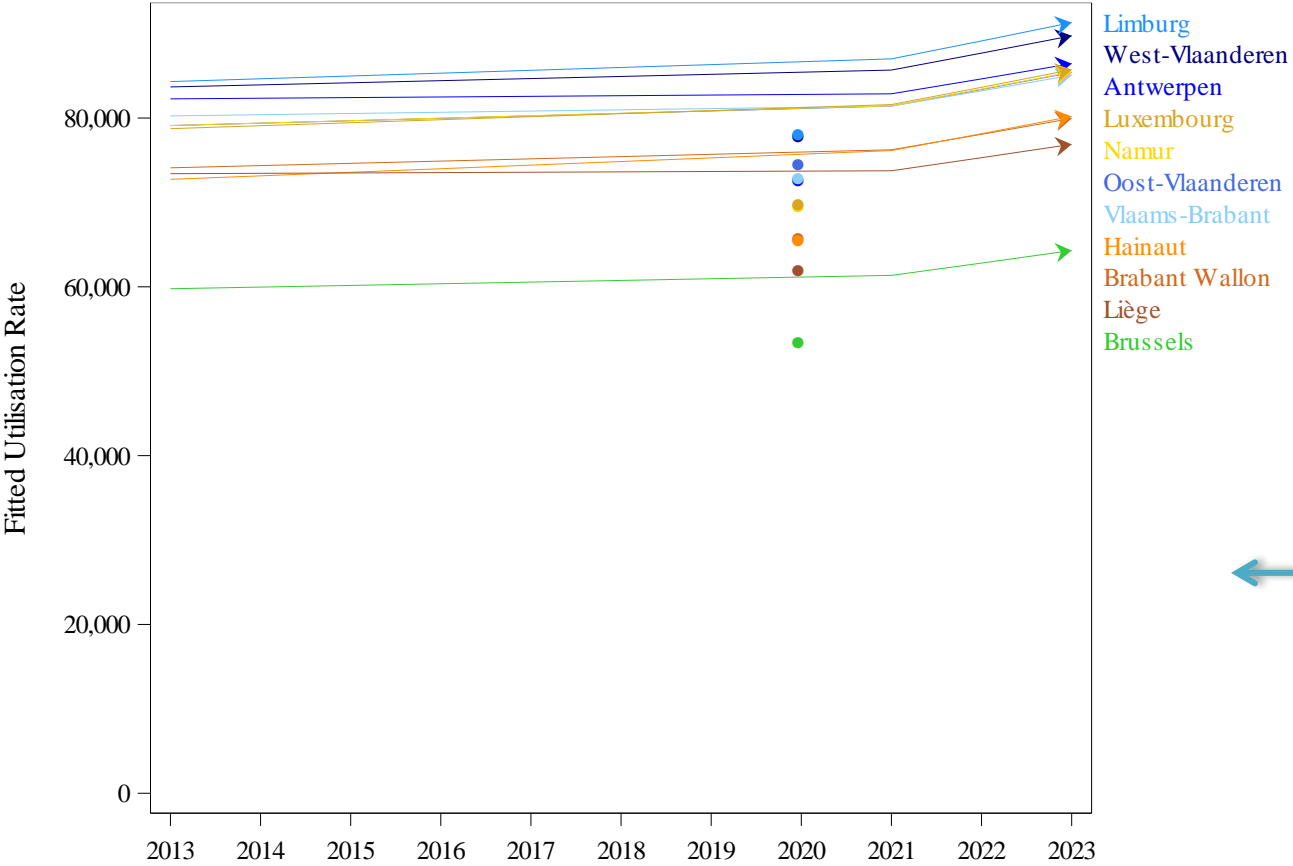
Trends in the usage rates, by province and region

This table reports the standardised **usage rates** for the last year analysed (2023), as well as the average **rates of increase**, by province, by region and in total, for the entire period (2013-2023), for the last years (2021-2023) and for the period preceding the last years (2013-2021)

In order to find out whether the trend in the last years differs from that in the years before, a linear mixed model was fitted in two steps. In the first step a change in trend on the national level is tested. If this test is significant, in a second step, the model tests whether the difference in trend is significant for each province, region and at the national level. The data of 2020 are excluded from the models.

The significance of the test for a change in trend is reported in the Structural break column : * P-value ≤ 0.05 / ** P-value ≤ 0.01 / *** P-value ≤ 0.001 and NS for a non-significant result.

'NA' is shown where the nomenclature codes selected for the analysis have not been used for the entire last period or when the statistical tests cannot be evaluated.



Regression lines per province showing a possibly different slope for the last years (2021-2023) compared to the years before (2013-2021).

Data of 2020 was excluded from this analysis, but is indicated on the graph for information.

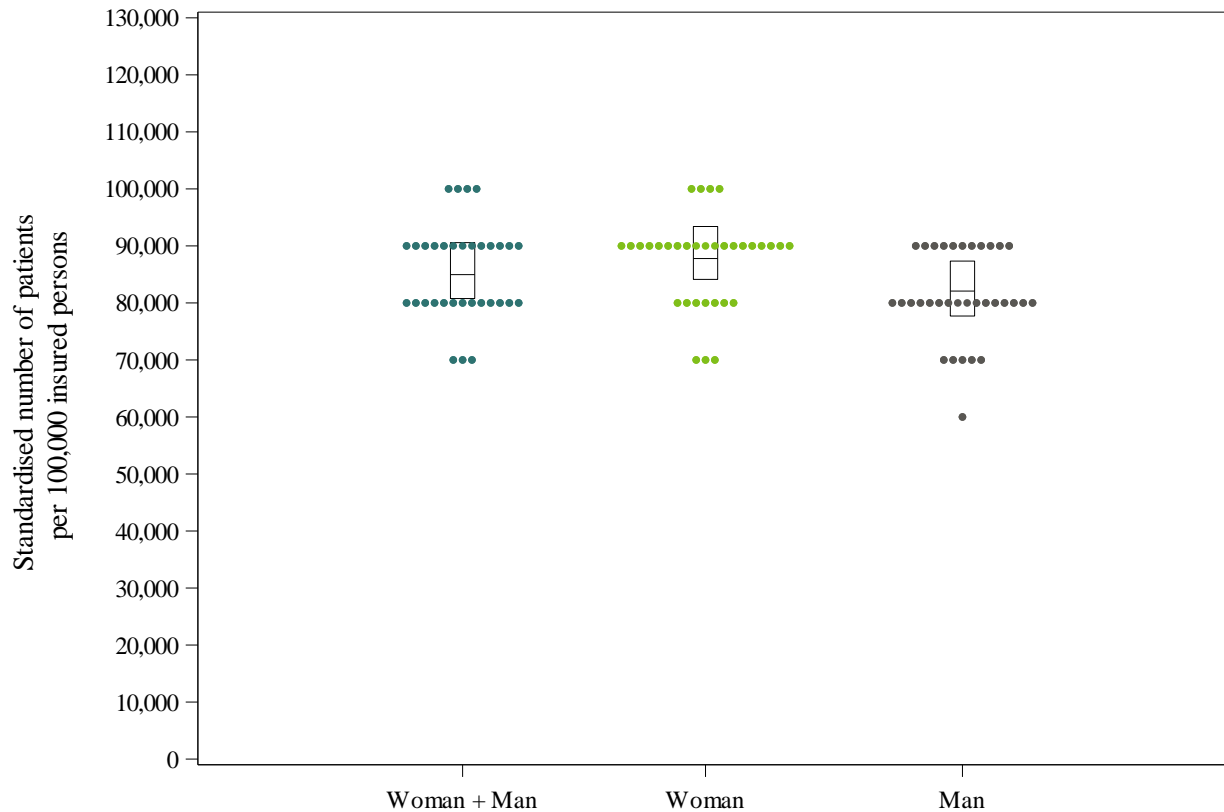
Trend break assessment model by province – Regression lines

F. Geographical variations in standardised usage rates

	TOTAL
<i>Estimated number of patients per year</i>	9.463.300
Coefficient of Variation (2023)	8,98
Max/Min Ratio* of the standardised usage rates (by region)	1,31
Max/Min Ratio* of the standardised usage rates (by district*)	1,4

Coefficient of Variation (2021-2023)	9,58
Coefficient of Variation (2013-2015)	9,98
<i>Statistically significant difference? ($p \leq 0.05$)</i>	No

* An 'NA' result indicates a ratio which cannot be calculated, i.e. the minimum value = zero (cf. B. Standardised usage rate by sex and age)



'Dot plot' showing standardised usage rates by district*, by sex

A **dot plot** is a distribution chart, which is useful for highlighting groups in the data, gaps in the distribution and outliers. Here, each dot represents the usage rate of a district*, for its entire population or broken down by sex.

The rates are rounded to the nearest unit, ten, hundred, etc., depending on the value of the maximum rate, in order to better group the values.

The graph also shows a box with the 25th, 50th and 75th percentiles of the non-rounded standardised usage rates for all patients. The bottom line of the box represents the 25th percentile, while the upper line represents the 75th percentile. The line inside the box represents the 50th percentile.



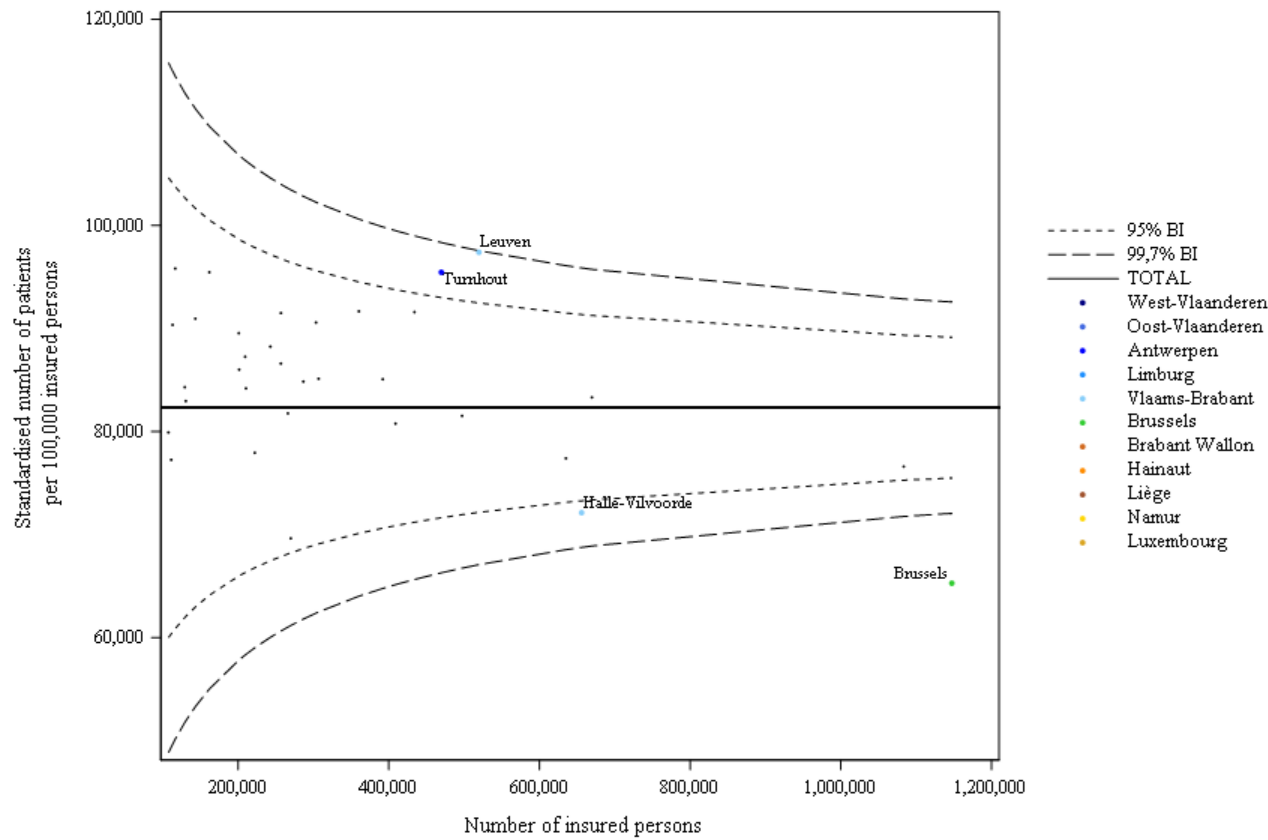
Map showing distribution of standardised usage rates, by district*

* Districts marked with * or + are grouped together within the same province. see page 12, Standardisation

On this map of Belgium, thin lines show the boundaries of the districts, while thick lines show the provincial borders. The districts* are coloured using a colour scale based on the level of usage rate in the district* compared to the Belgian national rate (overall rate). This ratio is expressed as a percentage: e.g. 0% if the district* rate is equal to the overall rate, 20% if the rate is 20% above the overall rate, and -20% if the rate is 20% below the overall rate. The percentages are calculated using the standardised rates of the last year analysed, and are displayed in bands of 20%. The following colour coding applies:

Colour	Category
Red	More than 50%
Orange	Between 30% and 50%
Light Orange	Between 10% and 30%
Yellow	Between - 10% and 10%
Light Green	Between -30% and -10%
Green	Between -50% and - 30%
Dark Green	Less than -50%
White	Not used

N.B.: The interpretation of this map is to be done in parallel with the graph in funnel plot (next page).



In this graph, the standardised usage rate in a district* is positioned versus the size of its population. Besides the dots representing the districts*, 95% and 99.7% **confidence intervals** are also shown on the graph. These are dependent of the size of the districts*. The thicker horizontal line shows the national standardised usage rate. The outlier districts* are identified as those districts* that fall outside the 99.7% confidence intervals, the zone between the 95% and 99.7% confidence intervals being considered as “warning zone”.

N.B.: The interpretation of this graph is to be done in parallel with the map of the distribution of usage rates (previous page).

‘Funnel plot’ showing the standardised usage rates by district* by the number of insured persons

G. Standardised healthcare expenditure borne by the insurance

	TOTAL
<i>Number of services per year</i>	50.710.726
<i>Annual expenditure (€)</i>	1.434.148.631
Average cost per patient (€)	151,55
Average cost per insured¹ (€)	124,49
Max/Min Ratio* of expenditure per insured (by region)	1,68
Max/Min Ratio* of expenditure per insured (by district*)	1,62

* An 'NA' result indicates a ratio which cannot be calculated, i.e. the minimum value = zero (cf. B. Standardised usage rate by sex and age)

¹ Reminder: Expenditure is based on the insured selected for the analysis (see section 2.E, Specific selection criteria)

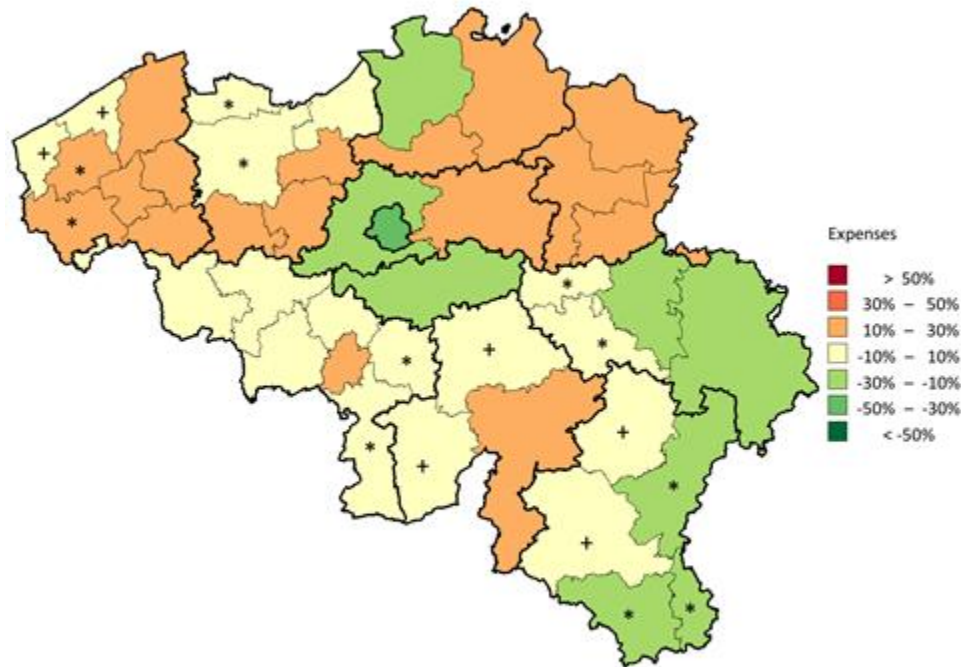
		Standardised expenditure (per insured ¹)	Relative difference compared to total
Provinces	West Flanders	144,54 €	16,11%
	East Flanders	137,13 €	10,15%
	Antwerp	123,63 €	-0,69%
	Limburg	153,72 €	23,48%
	Flemish Brabant	125,07 €	0,47%
	Brussels	80,09 €	-35,67%
	Walloon Brabant	104,49 €	-16,07%
	Hainaut	127,4 €	2,34%
	Liège	109,38 €	-12,14%
	Namur	132,59 €	6,51%
	Luxembourg	118,5 €	-4,81%
	Regions	Flanders	134,77 €
Brussels		80,09 €	-35,67%
Wallonia		119,24 €	-4,22%
TOTAL		124,49 €	

Regional and provincial distribution of standardised expenditure (2023)

¹ Reminder: Expenditure is based on the insured selected for the analysis (see section 2.E, Specific selection criteria)

Trends in expenditure, by service and by nomenclature code

Nomenclature	2013	2014	2015	2016	2017	2018	2019	2020	2021	2022	2023	Average annual growth rate
101010-	9,69	10,02	10,00	10,08	10,36	10,69	11,29	11,73	12,11	12,58	13,49	3,36%
101032-	15,99	16,39	16,51	16,61	16,84	16,98	17,64	18,14	18,47	18,86	20,22	2,38%
101076-	20,03	20,49	20,57	20,70	21,27	21,74	22,61	23,17	23,49	24,01	26,46	2,82%
103110-	22,02	22,64	22,71	22,74	23,02	23,34	24,04	24,38	24,63	25,14	26,47	1,86%
103132-	29,31	30,10	30,21	30,39	30,75	31,25	32,44	33,18	33,75	34,41	36,61	2,25%
103213-	15,53	15,81	15,51	15,73	16,17	16,11	16,84	16,99	16,82	17,39	18,81	1,94%
103235-	16,23	16,82	17,26	17,25	17,43	17,49	17,77	18,18	18,82	18,95	19,19	1,69%
103412-	23,67	24,25	24,33	24,50	24,78	25,15	26,05	26,54	26,93	27,35	28,96	2,04%
103434-	23,42	23,86	23,94	23,97	24,14	24,48	25,29	25,48	25,83	26,43	28,06	1,83%
103913-	30,74	30,26	30,12	22,75	0,00	0,00	0,00	0,00	0,00	0,00	0,00	NA
104112-	22,69	23,30	25,99	0,00	0,00	0,00	0,00	0,00	0,00	0,00	0,00	NA
104215-	38,05	39,08	39,30	39,65	40,11	40,73	42,27	43,24	43,87	44,48	47,10	2,16%
104230-	65,00	66,78	67,24	67,64	68,60	69,36	72,22	74,44	75,14	76,10	80,92	2,21%
104252-	41,94	43,27	43,47	43,75	44,32	44,95	46,62	47,79	48,42	49,13	52,27	2,23%
104355-	29,59	24,65	0,00	0,00	0,00	0,00	0,00	0,00	0,00	0,00	0,00	NA
104510-	24,67	25,39	25,75	25,63	25,45	25,95	27,18	27,44	27,45	27,58	29,30	1,73%
104532-	38,41	38,56	39,65	39,98	41,29	41,92	44,48	44,74	43,82	44,36	47,21	2,08%
104554-	26,49	27,47	28,31	27,75	28,62	29,08	30,08	30,73	30,58	30,49	32,08	1,94%



Map showing distribution of standardised expenditure, by district* (per insured person)

* Districts marked with * or + are grouped together within the same province.
see page 12, Standardisation

On this map of Belgium, thin lines show the boundaries of the districts, while thick lines show the provincial borders. The districts* are coloured using a colour scale based on the level of expenditure per insured in the district* compared to Belgian national (overall) expenditure per insured. This ratio is expressed as a percentage: e.g. 0% if expenditure in the district* is equal to the overall expenditure, 20% if it is 20% higher, and -20% if it is 20% lower. The percentages are calculated using the standardised expenditure of the last year analysed and are displayed in bands of 20%. The following colour coding applies:

Colour	Category
Dark Red	More than 50%
Red	Between 30% and 50%
Orange	Between 10% and 30%
Yellow	Between - 10% and 10%
Light Green	Between -30% and -10%
Green	Between -50% and - 30%
Dark Green	Less than -50%
White	No expenditure

General practitioners – Consultations and visits in general practice

Standardised expenditure per patient in 2023 and occurrences of practice per patient in 2022 (see Annex B), by demographic category

	Estimated std. expenditure per patient		Occurrence per year (Services)	Occurrence per year (Days)	Occurrence per day (Services)
	(€)	Tot. Relative Diff. (%)			
TOTAL	151,55		5,37	5,35	1,00
Sex					
Men	141,81	-6,43%	4,85	4,84	1,00
Women	159,61	5,32%	5,83	5,80	1,00
Reimbursement scheme					
General	132,99	-12,25%	4,85	4,84	1,00
Preferential	227,32	50,00%	7,55	7,52	1,00
Region					
Flanders	158,05	4,29%	5,51	5,50	1,00
Brussels	122,71	-19,03%	4,62	4,61	1,00
Wallonia	145,77	-3,81%	5,25	5,23	1,00
Age					
00-04	125,47	-17,21%	4,52	4,51	1,00
05-09	94,65	-37,55%	3,46	3,46	1,00
10-14	87,62	-42,18%	3,24	3,23	1,00
15-19	109,19	-27,95%	4,03	4,02	1,00
20-24	109,99	-27,42%	4,05	4,04	1,00
25-29	120,24	-20,66%	4,37	4,36	1,00
30-34	127,28	-16,01%	4,60	4,58	1,00
35-39	129,81	-14,35%	4,68	4,67	1,00
40-44	134,21	-11,44%	4,83	4,81	1,00
45-49	140,17	-7,51%	5,02	5,00	1,00
50-54	147,93	-2,39%	5,26	5,25	1,00
55-59	155,55	2,64%	5,53	5,51	1,00
60-64	157,09	3,66%	5,65	5,63	1,00
65-69	163,58	7,94%	5,92	5,90	1,00
70-74	184,76	21,91%	6,57	6,55	1,00
75-79	215,59	42,26%	7,56	7,53	1,00
80-84	259,64	71,32%	9,07	9,03	1,00
85-89	312,56	106,24%	10,70	10,64	1,01
90-94	360,54	137,90%	11,96	11,88	1,01
95+	385,51	154,38%	12,42	12,32	1,01

4. KEY DATA SUMMARY

		TOTAL	
PROVIDERS & PRESCRIBERS			
Main healthcare providers:	General practitioners	99,31%	
Main prescribers:	Not applicable	-	
USAGE RATE			
	Number of services per year	50.710.726	
	Average occurrence per patient per day (services)	1,00	
	Average occurrence per patient per year (days)	5,35	
	Total average occurrence	5,37	
	Estimated number of patients (per year)	9.463.300	
	Standardised usage rate (per 100 000 insured persons)	82.143	
	Percentage of outpatient care	100,00%	
POPULATION			
	% of the selected population compared to the total number of insured people	100,00%	
	Median age of patients	45 years	
	Max/min ratio ¹ of the median age (by district*)	1,12	
	Percentage of women (patients)	52,84%	
	Ratio Preferential rate/General rate (patients)	0,89	
TRENDS			
	Trend ² (2013-2023)	0,63%	***
	Trend ³ (2013-2021)	-0,30%	**
	Trend ³ (2021-2023)	4,44%	
GEOGRAPHICAL VARIATIONS			
	Coefficient of variation ⁴ (2013-2015)	9,98	NS
	Coefficient of variation ⁴ (2021-2023)	9,58	
	Max/min Ratio ¹ of usage rate (per 100 000 insured persons, by region)	1,31	
	Max/min Ratio ¹ of usage rate (per 100 000 insured persons, by district*)	1,4	
DIRECT EXPENDITURE			
	Annual expenditure	1.434.148.631 €	
	Average annual expenditure per insured ⁵	124,49 €	
	Max/Min Ratio ¹ of expenditure per insured (by region)	1,68	
	Max/Min Ratio ¹ of expenditure per insured (by district*)	1,62	
	Average annual expenditure per patient	151,55 €	
CODING VARIATIONS & PRACTICE ALTERNATIVES			
	Variations in practice coding ⁶ (by province)	Yes	***
	Variations in the choice of practice alternatives ⁶ (by province)	Yes	***

¹ An 'NA' result indicates a ratio, which cannot be calculated, i.e. the minimum value equals zero.

² The test indicates whether the observed slope is statistically significantly different from 0%.

³ The test indicates whether the break in trend between the two periods is statistically significant.

⁴ The test compares the coefficients of variation for the two periods and indicates whether the difference is statistically significant.

⁵ Expenditure is based on the insured people selected.

⁶ The test indicates whether the practice variation between provinces is statistically significant

5. APPENDICES

A. Analysis of variance (ANOVA), except Brussels

Statistical significance of the differences observed in 2023		
<i>By region?</i>	No	NS
<i>By sex?</i>	Yes	***
<i>By reimbursement scheme?</i>	Yes	***
<i>By sex and per region?</i>	No	NS
<i>By reimbursement scheme and per region?</i>	No	NS
<i>By sex and per reimbursement scheme?</i>	No	NS
<i>By sex and reimbursement scheme and per region?</i>	No	NS

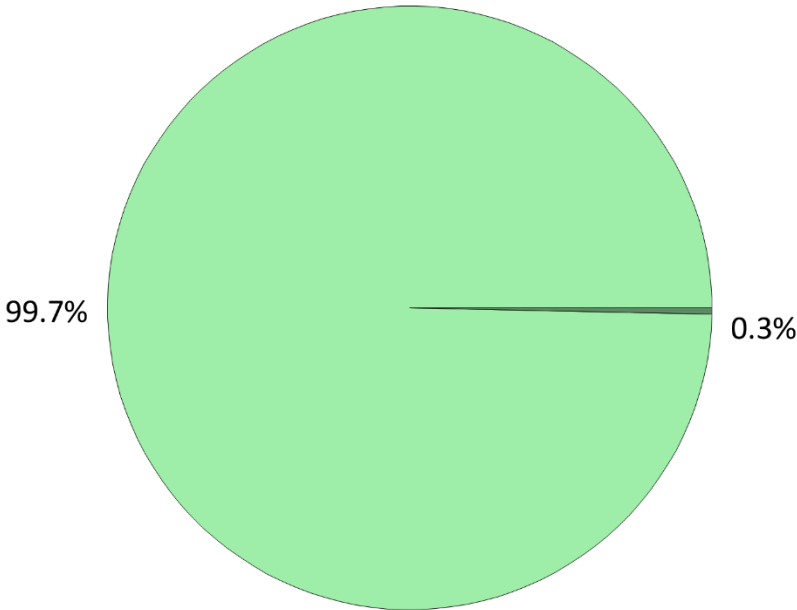
In order to be able to assess the significance of the observed differences, a linear mixed ANOVA model was fitted to the data of all districts* of the Walloon and Flemish regions, after standardising for age. The model has region, sex and reimbursement scheme as fixed effects and also contains all two-way and three-way interactions between these effects.

In order to interpret the model correctly, first the three-way interaction should be evaluated, followed by the two-way interactions and finally by the main effects. If the three-way interaction is significant, the interpretation of the model should be done at this level only and the two-way interactions and main effects should not be interpreted. If the three-way interaction is not significant, the two-way interactions are evaluated. Every main effects that appears in a significant interaction should be interpreted at the level of the interaction and not at the level of that main effect. Main effects can only be interpreted directly if they don't appear in a significant interaction.

The **asterisks** represent the level of statistical significance of the tests: * P-value $\leq 0,05$ / ** P-value $\leq 0,01$ / *** P-value $\leq 0,001$ or NS for a non-significant result.

B. Frequency of practice occurrences (per patient)

Average number of services per day per patient : 1,00



Occurrence by Day:
1 2+

Distribution of patient days by occurrence of practice per day (2022)

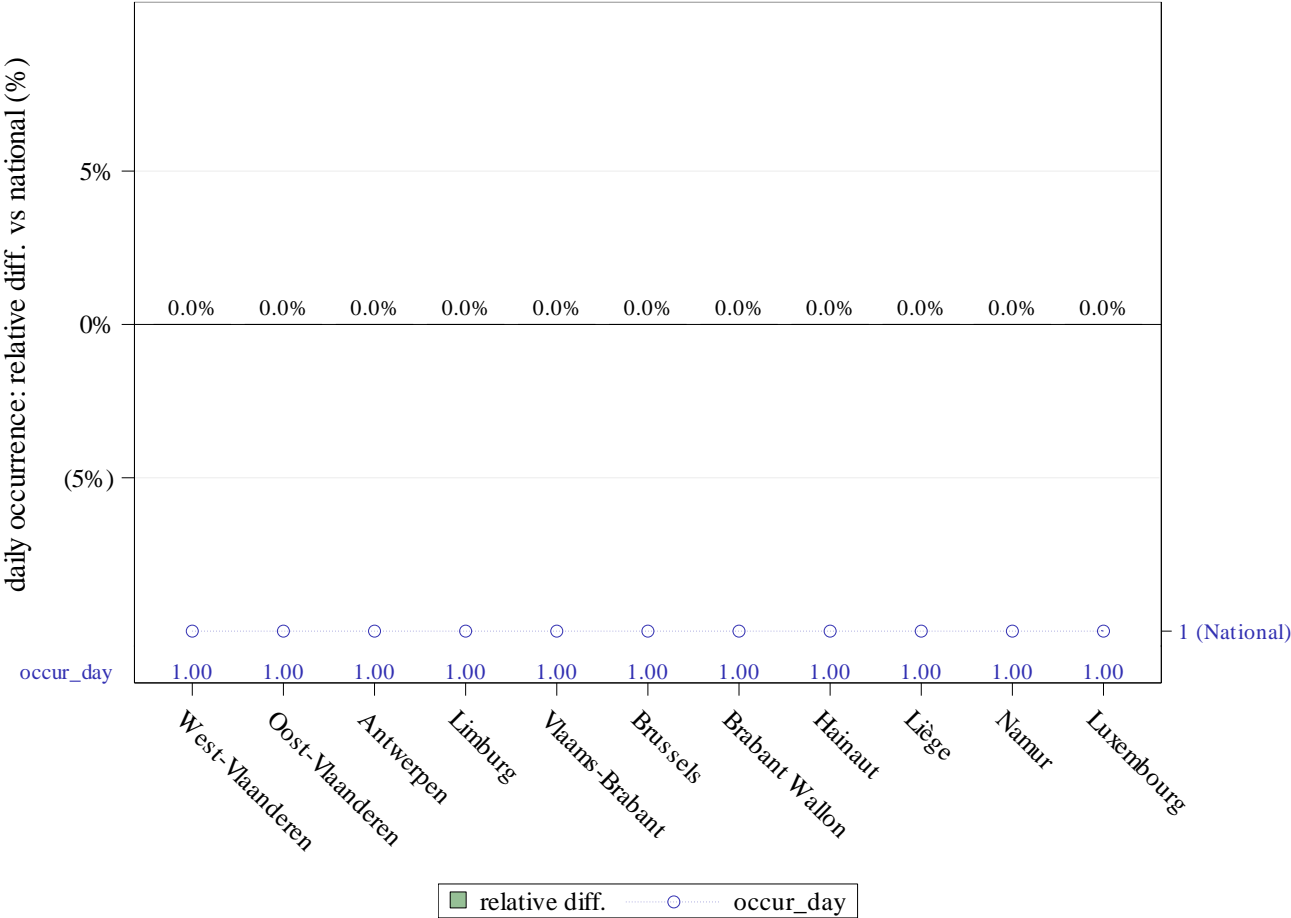
Sometimes several codes (similar or different) relating to the same practice are charged on the same day for the same patient. This may be due, among other things, to an anatomical effect, which may lead, depending on the organ concerned, to performing the same practice **bilaterally**, thus causing an occurrence of 2 services on the same day.

This pie chart shows the distribution of patient days according to the number of services performed on the same day for the same patient.

These frequency analyses of occurrences are carried out over the year **2022** using the following databases: Documents P, ADH and SHA.

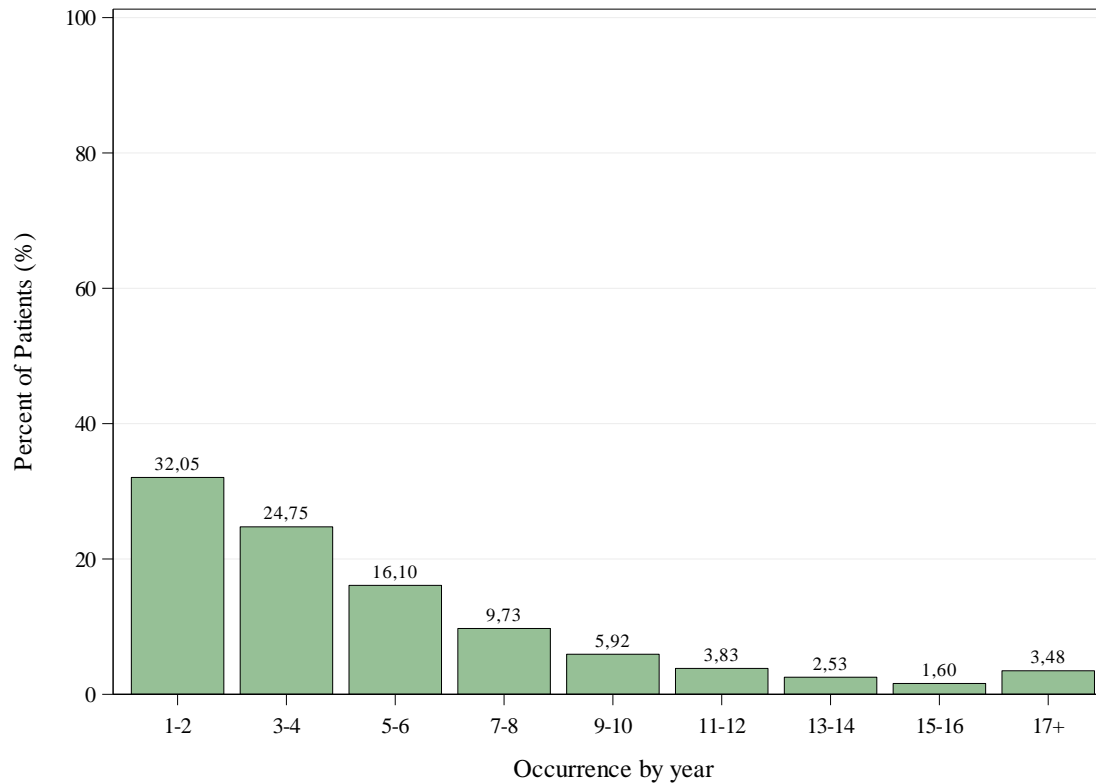
Values « **n.a.** » are indicated if the data were not available at the time of this report.

General practitioners – Consultations and visits in general practice



Average number of services per day per patient by province and variation in relation to the national average (2022)

Average number of days per patient over the year : 5,35



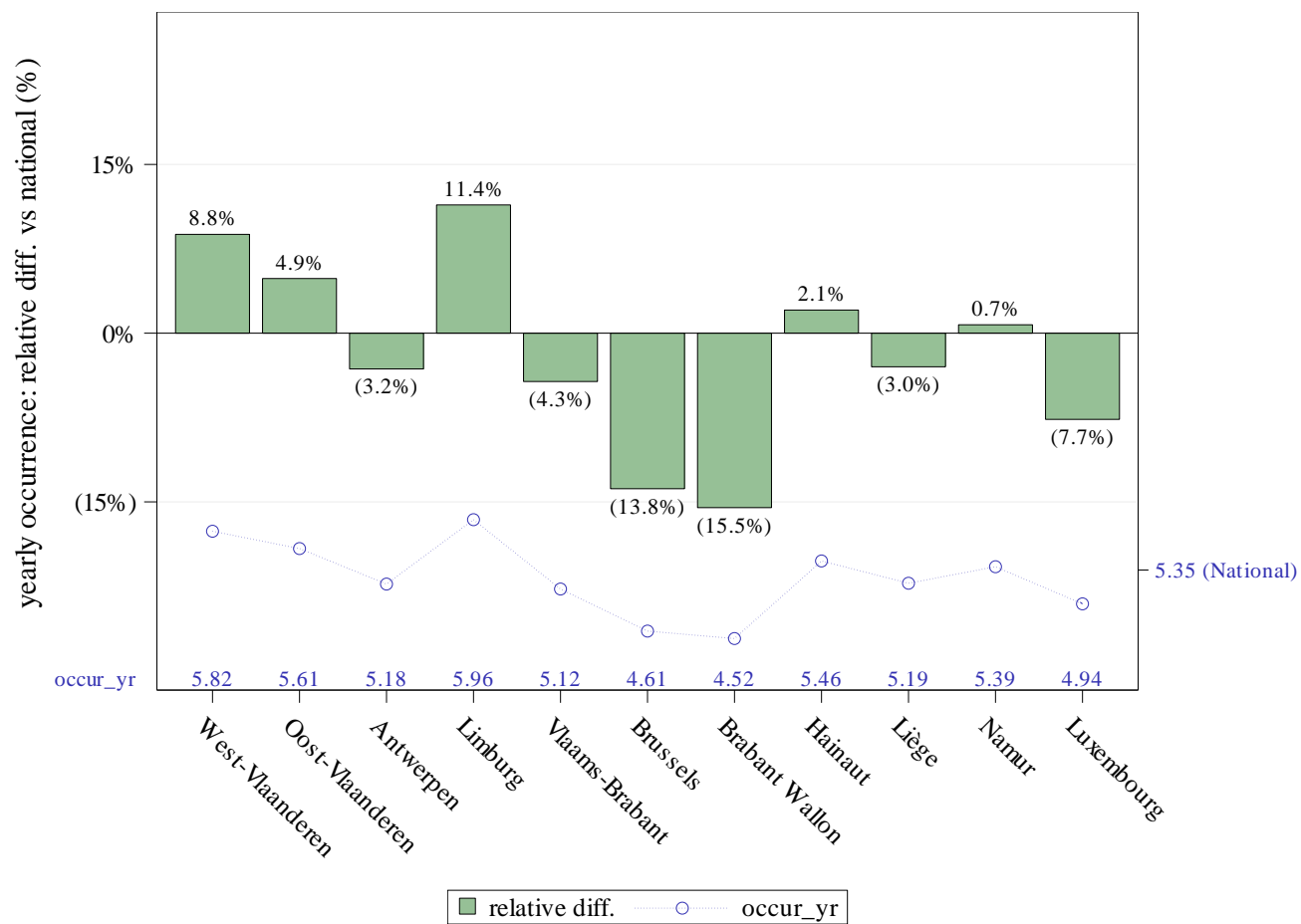
Distribution of patients by occurrence of practice over the year (2022)

After taking into account the occurrence per day, it is also possible for one or more services of the same practice to be charged on several different days for the same patient during the same year.

This histogram shows the distribution of patients by the occurrence of the practice over the year (which does not include the occurrence per day).

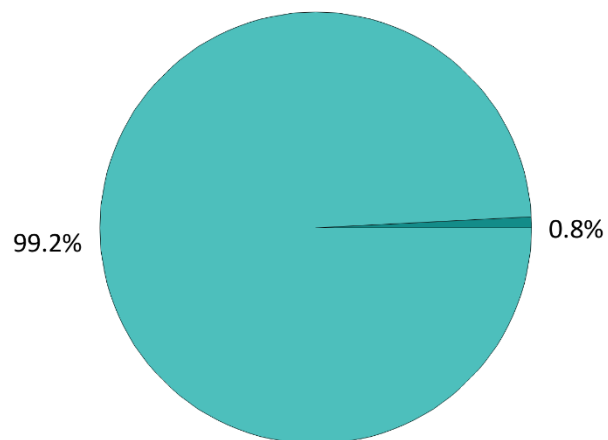
The year **2022** was taken into account to calculate the occurrence of the services (from the following databases: Documents P, ADH and SHA).

General practitioners – Consultations and visits in general practice



Average number of days per patient over the year by province and variation in relation to the national average (2022)

C. Types of patient care



■ Outpatient (clinic) ■ Outpatient (private)

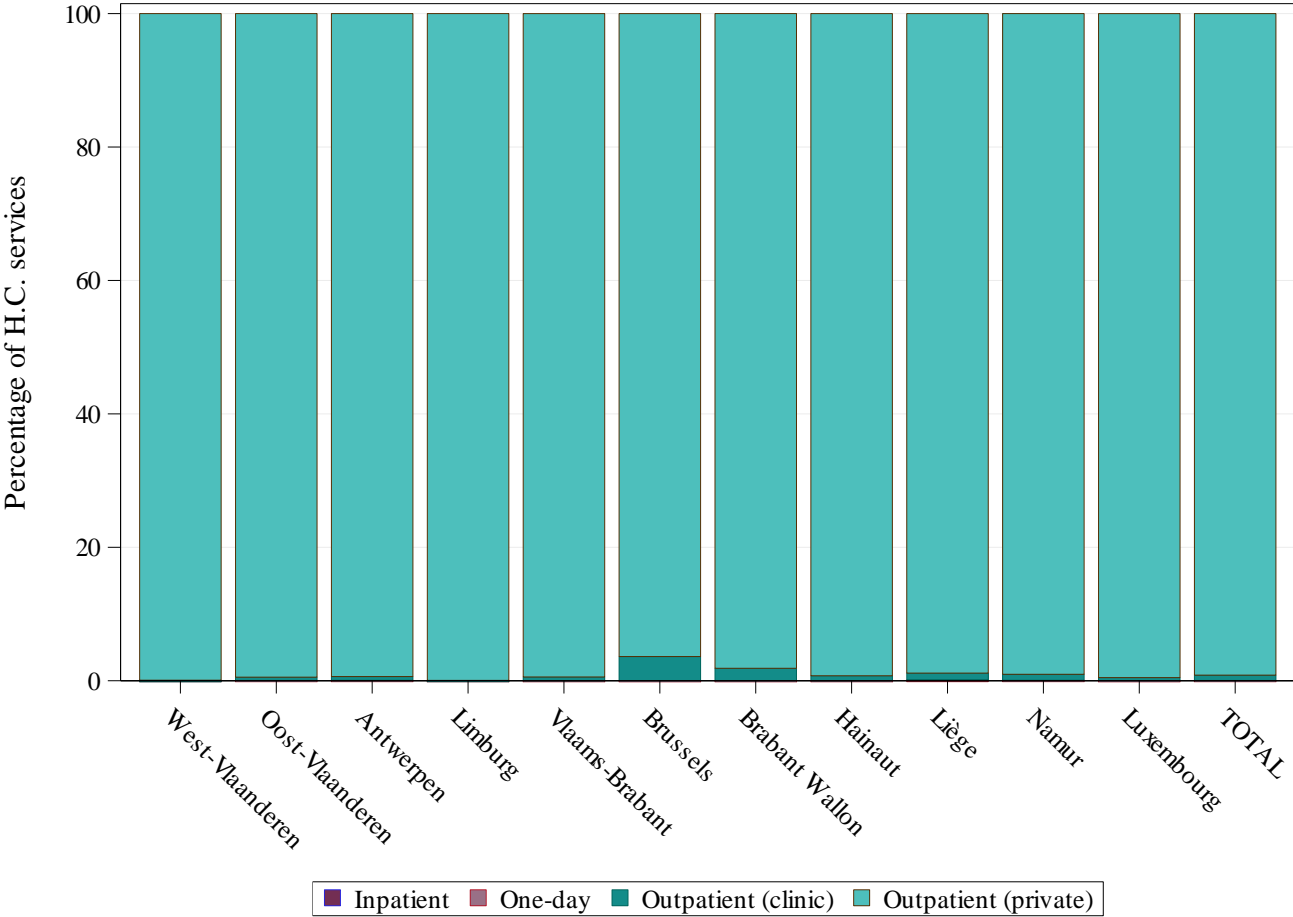
Distribution of types of patient care in 2022

Care Settings	
Outpatient (private)	99,2%
Outpatient (polyclinic)	0,8%
(Day) Hospital	0,0%
Hospital (stay)	0,0%

In addition to the chapter on the rate of outpatient care (see p.18), the analysis of types of patient care can be refined by identifying the outpatient (private and polyclinic) and inpatient (day or standard hospitalisation) sub-sectors.

These analyses are carried out over the year **2022** using the following databases: Documents P, ADH and SHA.

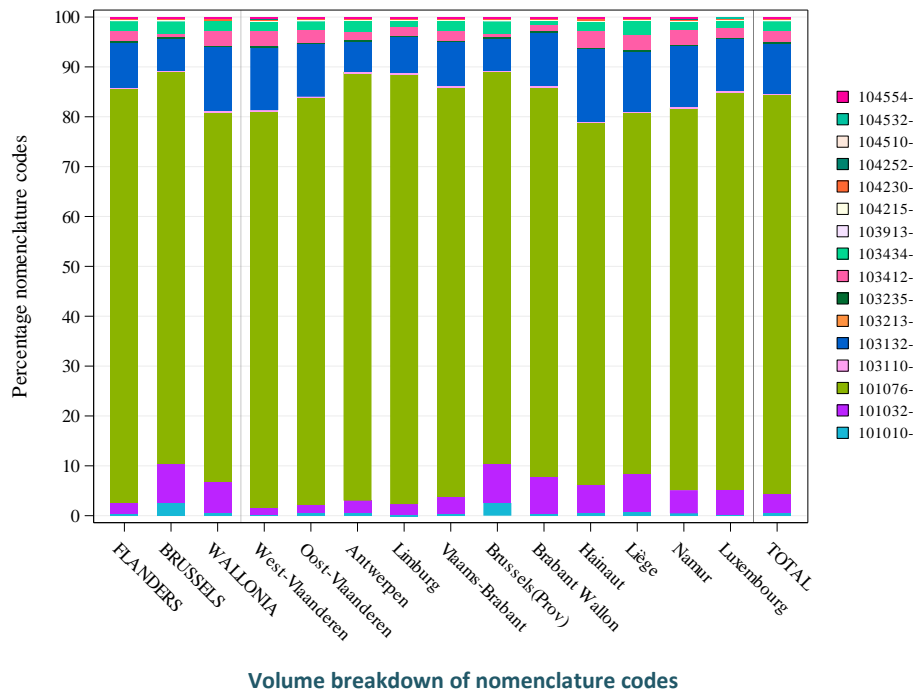
Values « **n.a.** » are indicated if the data were not available at the time of this report.



Distribution of types of patient care by province (2022)

D. Coding variations and practice alternatives

➔ Variations in coding:



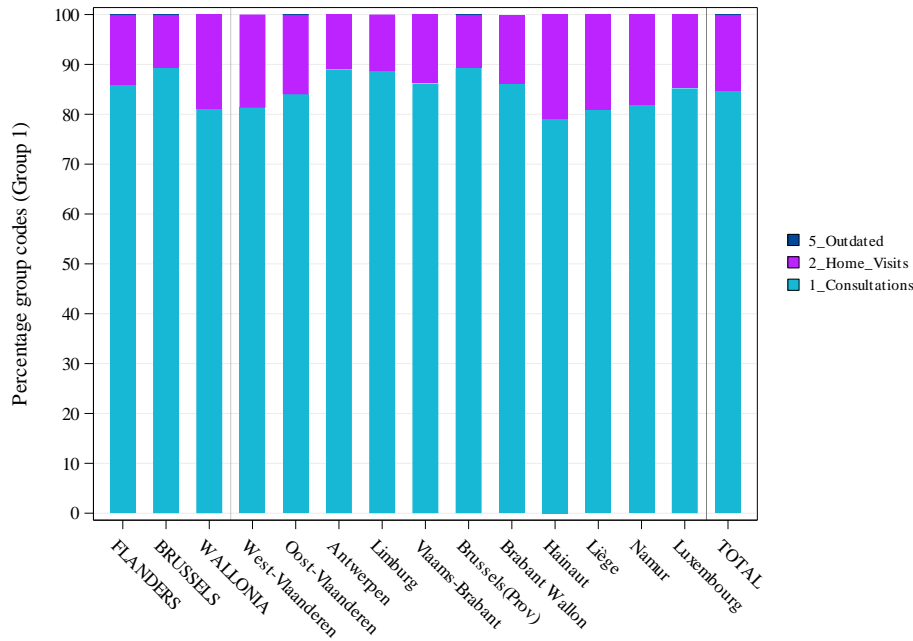
[Due to the large number of nomenclature codes selected for this analysis, we cannot include them in the legend here. We therefore invite you to read the details concerning them on page 4 of this report.]

Significance	By region	By province
Use of Nomenclature codes ¹	***	***

¹ The calculation of significance is carried out here by comparing the geographical differences in the use of the different nomenclature codes to code the practice.

The asterisks represent the level of statistical significance of Chi-square test: * P-value ≤ 0,05 / ** P-value ≤ 0,01 / *** P-value ≤ 0,001. NS and NA respectively indicate that the variations are not significant or not applicable.

→ Variations in practice alternatives:



Breakdown of choice for practice alternatives

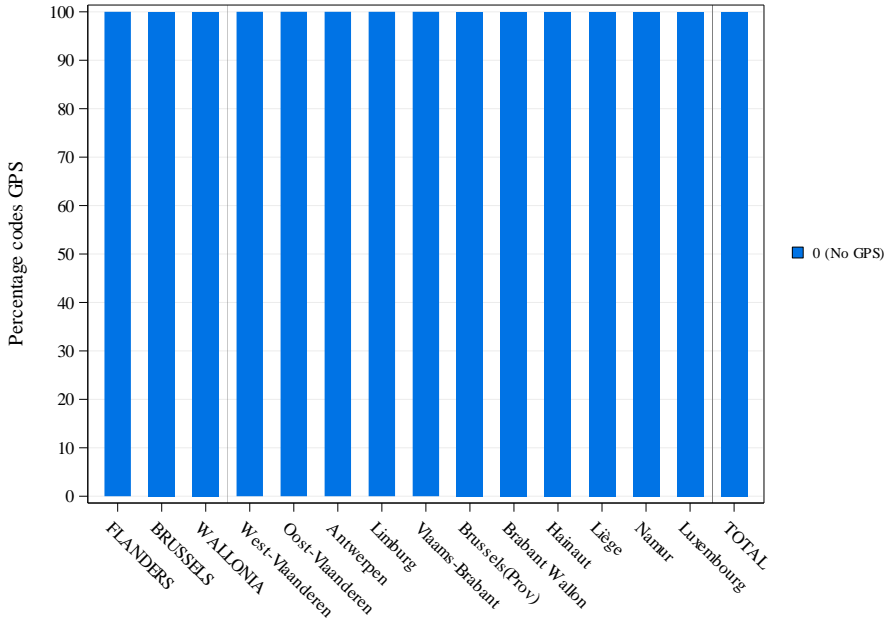
Combined codes	Groupings
101010-	1_Consultations
101032-	1_Consultations
101076-	1_Consultations
103110-	2_Home_Visits
103132-	2_Home_Visits
103213-	2_Home_Visits
103235-	2_Home_Visits
103412-	2_Home_Visits
103434-	2_Home_Visits
103913-	5_Outdated
104215-	2_Home_Visits
104230-	2_Home_Visits
104252-	2_Home_Visits
104510-	2_Home_Visits
104532-	2_Home_Visits
104554-	2_Home_Visits

Significance	By region	By province
Choice of Practice alternatives	***	***



According to the nature of the practice and the analytical tools available, it may be possible to identify and define alternatives for carrying out the practice. In this case, the nomenclature codes defined for the analysis of the practice are grouped together with the aim of analysing whether or not the choices of these alternatives are homogeneous across the territory. The calculation of significance displayed in the table is carried out by comparing these groups of codes with each other.

➔ Variation in the use of Global Payment with Standardisation (GPS) :



Breakdown by volume of pseudocodes of GPS

Significance	By region	By province
Use of Global Payment with Standardisation ¹	NS	NS

¹ The calculation of significance is carried out here by comparing the use of Global Payment with Standardisation as a whole compared to the non-use of these packages.